

Product datasheet for **TA358330**

GDA Rabbit Polyclonal Antibody

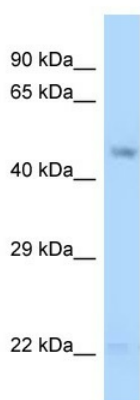
Product data:

Product Type:	Primary Antibodies
Applications:	WB
Reactivity:	Human
Host:	Rabbit
Clonality:	Polyclonal
Specificity:	Expected reactivity: Cow, Dog, Guinea Pig, Horse, Human, Mouse, Rabbit, Rat Homology: Cow: 100%; Dog: 93%; Guinea Pig: 86%; Horse: 93%; Human: 100%; Mouse: 93%; Rabbit: 93%; Rat: 93%
Formulation:	Liquid. Purified antibody supplied in 1x PBS buffer with 0.09% (w/v) sodium azide and 2% sucrose. <i>Note that this product is shipped as lyophilized powder to China customers.</i>
Concentration:	lot specific
Purification:	Affinity Purified
Conjugation:	Unconjugated
Storage:	For short term use, store at 2-8°C up to 1 week. For long term storage, store at -20°C in small aliquots to prevent freeze-thaw cycles.
Stability:	Shelf life: one year from despatch.
Predicted Protein Size:	50kDa
Gene Name:	guanine deaminase
Database Link:	NP_004284 Entrez Gene 9615 Human Q9Y2T3
Background:	The protein encoded by this gene is an enzyme that catalyzes the hydrolytic deamination of guanine, producing xanthine and ammonia. It is also known as a cytosolic regulator of PSD-95 postsynaptic targeting.
Synonyms:	CYPIN; D10S105E; GAH; Guanase; KIAA1258; MGC9982; NEDASIN; p51-nedasin; SLC25A16
Protein Pathways:	Metabolic pathways, Purine metabolism



[View online »](#)

Product images:



WB Suggested Anti-GDA Antibody
Titration: 1.0 ug/ml
Positive Control: 721_B Whole Cell