

## Product datasheet for **TA358328**

### MCC Rabbit Polyclonal Antibody

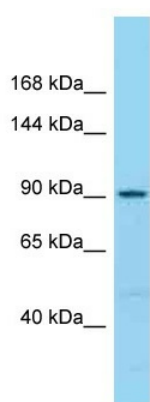
#### Product data:

Product Type:	Primary Antibodies
Applications:	IHC, WB
Reactivity:	Human
Host:	Rabbit
Clonality:	Polyclonal
Specificity:	<b>Expected reactivity:</b> Dog, Guinea Pig, Horse, Human, Mouse, Rat <b>Homology:</b> Dog: 93%; Guinea Pig: 100%; Horse: 86%; Human: 100%; Mouse: 79%; Rat: 93%
Formulation:	Liquid. Purified antibody supplied in 1x PBS buffer with 0.09% (w/v) sodium azide and 2% sucrose. <i>Note that this product is shipped as lyophilized powder to China customers.</i>
Concentration:	lot specific
Purification:	Affinity Purified
Conjugation:	Unconjugated
Storage:	For short term use, store at 2-8°C up to 1 week. For long term storage, store at -20°C in small aliquots to prevent freeze-thaw cycles.
Stability:	Shelf life: one year from despatch.
Predicted Protein Size:	91kDa
Gene Name:	mutated in colorectal cancers
Database Link:	<a href="#">NP_002378</a> <a href="#">Entrez Gene 4163 Human</a> <a href="#">P23508-2</a>
Background:	This gene is a candidate colorectal tumor suppressor gene that is thought to negatively regulate cell cycle progression. The orthologous gene in the mouse expresses a phosphoprotein associated with the plasma membrane and membrane organelles, and overexpression of the mouse protein inhibits entry into S phase. Multiple transcript variants encoding different isoforms have been found for this gene.
Synonyms:	DKFZp762O1615; FLJ38893; FLJ46755; MCC1
Protein Families:	Druggable Genome

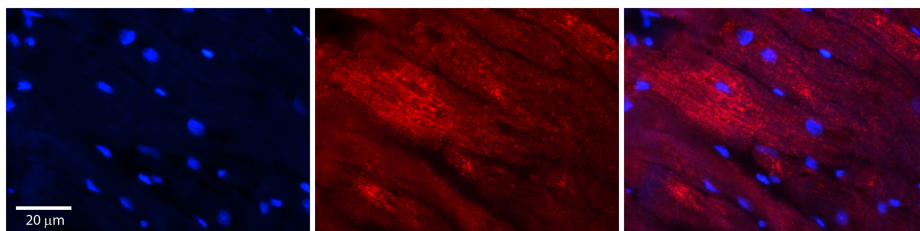


[View online »](#)

## Product images:



WB Suggested Anti-MCC Antibody  
Titration: 1.0 ug/ml  
Positive Control: MCF7 Whole Cell



Rabbit Anti-MCC Antibody  
Catalog Number: TA358328  
Formalin Fixed Paraffin Embedded Tissue:  
Human Heart Tissue  
Observed Staining: Cytoplasm in cardiomyocytes  
Primary Antibody Concentration: 1:100  
Other Working Concentrations: N/A  
Secondary Antibody: Donkey anti-Rabbit-Cy3  
Secondary Antibody Concentration: 1:200  
Magnification: 20X  
Exposure Time: 0.5–2.0 sec