

## Product datasheet for **TA358325**

### Poliovirus Receptor (PVR) Rabbit Polyclonal Antibody

#### Product data:

Product Type:	Primary Antibodies
Applications:	IHC, WB
Reactivity:	Human
Host:	Rabbit
Clonality:	Polyclonal
Specificity:	<b>Expected reactivity:</b> Human <b>Homology:</b> Human: 100%
Formulation:	Liquid. Purified antibody supplied in 1x PBS buffer with 0.09% (w/v) sodium azide and 2% sucrose. <i>Note that this product is shipped as lyophilized powder to China customers.</i>
Concentration:	lot specific
Purification:	Affinity Purified
Conjugation:	Unconjugated
Storage:	For short term use, store at 2-8°C up to 1 week. For long term storage, store at -20°C in small aliquots to prevent freeze-thaw cycles.
Stability:	Shelf life: one year from despatch.
Predicted Protein Size:	45kDa
Gene Name:	poliovirus receptor
Database Link:	<a href="#">NP_006496</a> <a href="#">Entrez Gene 5817 Human P15151</a>
Background:	The protein encoded by this gene is a transmembrane glycoprotein belonging to the immunoglobulin superfamily. The external domain mediates cell attachment to the extracellular matrix molecule vitronectin, while its intracellular domain interacts with the dynein light chain Tctex-1/DYNLT1. The gene is specific to the primate lineage, and serves as a cellular receptor for poliovirus in the first step of poliovirus replication. Multiple transcript variants encoding different isoforms have been found for this gene.
Synonyms:	CD155; FLJ25946; HVED; Necl-5; NECL5; PVS; Tage4



[View online »](#)

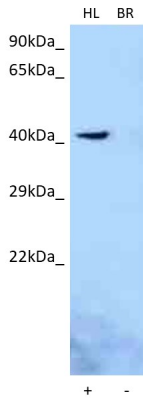
**Protein Families:** Druggable Genome, Transmembrane

**Protein Pathways:** Cell adhesion molecules (CAMs)

**Product images:**



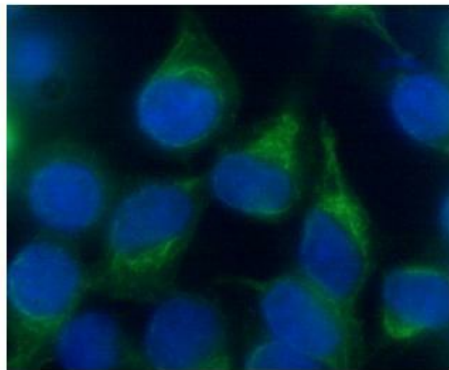
WB Suggested Anti-PVR Antibody  
Titration: 1.0 ug/ml  
Positive Control: HepG2 Whole Cell



Host: Rabbit  
Target name: PVR  
Positive control: ~25ug HeLa Cell Lysate (HL)  
Negative control: ~25ug Human Brain (BR)  
Antibody concentration: 1ug/ml

Host: Rabbit  
Target: PVR  
Positive control (+): HeLa (HL)  
Negative control (-): Human brain (BR)  
Antibody concentration: 1ug/ml

**CD155**



**Green: CD155 Blue: DAPI**

See IHC 1 Data and customer Feedback for more Information

Researcher: Dr. Fabio D'Amico, University of Catania  
Application: IHC  
Species+tissue/cell type: Human Keratinocytes  
Primary antibody dilution: 1:200  
Secondary antibody: Anti-rabbit Dylight 488  
Secondary antibody dilution: 1:500