

## Product datasheet for **TA358320**

### Moesin (MSN) Rabbit Polyclonal Antibody

#### Product data:

Product Type:	Primary Antibodies
Applications:	IHC, WB
Reactivity:	Human
Host:	Rabbit
Clonality:	Polyclonal
Specificity:	<b>Expected reactivity:</b> Cow, Dog, Guinea Pig, Horse, Human, Mouse, Rabbit, Rat, Zebrafish <b>Homology:</b> Cow: 100%; Dog: 100%; Guinea Pig: 100%; Horse: 100%; Human: 100%; Mouse: 100%; Rabbit: 100%; Rat: 100%; Zebrafish: 93%
Formulation:	Liquid. Purified antibody supplied in 1x PBS buffer with 0.09% (w/v) sodium azide and 2% sucrose. <i>Note that this product is shipped as lyophilized powder to China customers.</i>
Concentration:	lot specific
Purification:	Affinity Purified
Conjugation:	Unconjugated
Storage:	For short term use, store at 2-8°C up to 1 week. For long term storage, store at -20°C in small aliquots to prevent freeze-thaw cycles.
Stability:	Shelf life: one year from despatch.
Predicted Protein Size:	68kDa
Gene Name:	moesin
Database Link:	<a href="#">NP_002435</a> <a href="#">Entrez Gene 4478 Human</a> <a href="#">P26038</a>
Background:	Moesin (for membrane-organizing extension spike protein) is a member of the ERM family which includes ezrin and radixin. ERM proteins appear to function as cross-linkers between plasma membranes and actin-based cytoskeletons. Moesin is localized to filopodia and other membranous protrusions that are important for cell-cell recognition and signaling and for cell movement.
Synonyms:	moesin



[View online »](#)

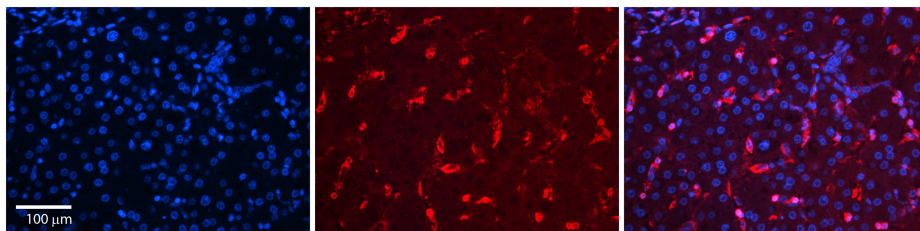
**Protein Families:** Druggable Genome

**Protein Pathways:** Leukocyte transendothelial migration, Regulation of actin cytoskeleton

**Product images:**



WB Suggested Anti-MSN Antibody  
Titration: 1.0 ug/ml  
Positive Control: HepG2 Whole Cell



Rabbit Anti-MSN Antibody  
Catalog Number: TA358320  
Formalin Fixed Paraffin Embedded Tissue:  
Human Liver Tissue  
Observed Staining: Cytoplasm and plasma membrane in endothelial cells in sinusoids  
Primary Antibody Concentration: N/A  
Other Working Concentrations: 1:600  
Secondary Antibody: Donkey anti-Rabbit-Cy3  
Secondary Antibody Concentration: 1:200  
Magnification: 20X  
Exposure Time: 0.5–2.0 sec