

## Product datasheet for **TA358318**

### AVPR1A Rabbit Polyclonal Antibody

#### Product data:

Product Type:	Primary Antibodies
Applications:	WB
Reactivity:	Human
Host:	Rabbit
Clonality:	Polyclonal
Specificity:	<b>Expected reactivity:</b> Cow, Dog, Guinea Pig, Horse, Human, Mouse, Pig, Rabbit, Rat, Sheep <b>Homology:</b> Cow: 79%; Dog: 79%; Guinea Pig: 93%; Horse: 92%; Human: 100%; Mouse: 100%; Pig: 100%; Rabbit: 93%; Rat: 100%; Sheep: 86%
Formulation:	Liquid. Purified antibody supplied in 1x PBS buffer with 0.09% (w/v) sodium azide and 2% sucrose. <i>Note that this product is shipped as lyophilized powder to China customers.</i>
Concentration:	lot specific
Purification:	Affinity Purified
Conjugation:	Unconjugated
Storage:	For short term use, store at 2-8°C up to 1 week. For long term storage, store at -20°C in small aliquots to prevent freeze-thaw cycles.
Stability:	Shelf life: one year from despatch.
Predicted Protein Size:	46kDa
Gene Name:	arginine vasopressin receptor 1A
Database Link:	<a href="#">NP_000697</a> <a href="#">Entrez Gene 552 Human P37288</a>
Background:	The protein encoded by this gene acts as receptor for arginine vasopressin. This receptor belongs to the subfamily of G-protein coupled receptors which includes AVPR1B, V2R and OXT receptors. Its activity is mediated by G proteins which stimulate a phosphatidylinositol-calcium second messenger system. The receptor mediates cell contraction and proliferation, platelet aggregation, release of coagulation factor and glycogenolysis.
Synonyms:	AVPR1; V1aR

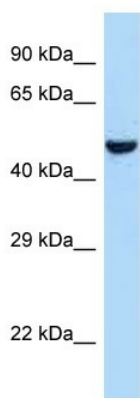


[View online »](#)

**Protein Families:** Druggable Genome, GPCR, Transmembrane

**Protein Pathways:** Calcium signaling pathway, Neuroactive ligand-receptor interaction, Vascular smooth muscle contraction

**Product images:**



WB Suggested Anti-AVPR1A Antibody  
Titration: 1.0 ug/ml  
Positive Control: 293T Whole Cell