

Product datasheet for **TA358312**

GPR19 Rabbit Polyclonal Antibody

Product data:

Product Type:	Primary Antibodies
Applications:	WB
Reactivity:	Human
Host:	Rabbit
Clonality:	Polyclonal
Specificity:	Expected reactivity: Cow, Dog, Guinea Pig, Horse, Human, Mouse, Rabbit, Rat Homology: Cow: 93%; Dog: 86%; Guinea Pig: 93%; Horse: 93%; Human: 100%; Mouse: 100%; Rabbit: 100%; Rat: 100%
Formulation:	Liquid. Purified antibody supplied in 1x PBS buffer with 0.09% (w/v) sodium azide and 2% sucrose. <i>Note that this product is shipped as lyophilized powder to China customers.</i>
Concentration:	lot specific
Purification:	Affinity Purified
Conjugation:	Unconjugated
Storage:	For short term use, store at 2-8°C up to 1 week. For long term storage, store at -20°C in small aliquots to prevent freeze-thaw cycles.
Stability:	Shelf life: one year from despatch.
Predicted Protein Size:	46kDa
Gene Name:	G protein-coupled receptor 19
Database Link:	NP_006134 Entrez Gene 2842 Human Q15760
Background:	GPR19 is a orphan receptor.
Synonyms:	Gpr19
Protein Families:	Druggable Genome, GPCR, Transmembrane

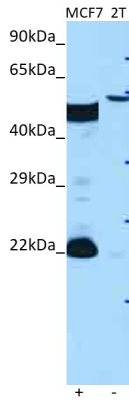


[View online »](#)

Product images:



WB Suggested Anti-GPR19 Antibody
 Titration: 1.0 ug/ml
 Positive Control: Fetal kidney



Host: Rabbit
 Target name: GPR19
 Positive control: ~25ug MCF7 Cell Lysate (MCF7)
 Negative control: ~25ug 293T Cell Lysate (2T)
 Antibody concentration: 1ug/ml

Host: Rabbit
 Target: GPR19
 Positive control (+): MCF7 (N10)
 Negative control (-): 293T (2T)
 Antibody concentration: 1ug/ml