

Product datasheet for **TA358305**

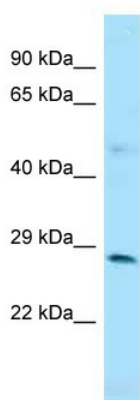
ZFYVE21 Rabbit Polyclonal Antibody

Product data:

Product Type:	Primary Antibodies
Applications:	WB
Reactivity:	Human
Host:	Rabbit
Clonality:	Polyclonal
Specificity:	Expected reactivity: Cow, Dog, Guinea Pig, Horse, Human, Mouse, Rabbit, Rat, Zebrafish Homology: Cow: 85%; Dog: 93%; Guinea Pig: 86%; Horse: 86%; Human: 100%; Mouse: 86%; Rabbit: 79%; Rat: 93%; Zebrafish: 79%
Formulation:	Liquid. Purified antibody supplied in 1x PBS buffer with 0.09% (w/v) sodium azide and 2% sucrose. <i>Note that this product is shipped as lyophilized powder to China customers.</i>
Concentration:	lot specific
Purification:	Affinity Purified
Conjugation:	Unconjugated
Storage:	For short term use, store at 2-8°C up to 1 week. For long term storage, store at -20°C in small aliquots to prevent freeze-thaw cycles.
Stability:	Shelf life: one year from despatch.
Predicted Protein Size:	26kDa
Gene Name:	zinc finger FYVE-type containing 21
Database Link:	NP_076976 Entrez Gene 79038 Human Q9BQ24
Background:	ZFYVE21 plays a role in cell adhesion, and thereby in cell motility, regulating microtubule-induced PTK2/FAK dephosphorylation, an event important for focal adhesion disassembly, as well as integrin beta-1/ITGB1 cell surface expression.
Synonyms:	MGC2550



[View online »](#)

Product images:

WB Suggested Anti-ZFYVE21 Antibody
Titration: 1.0 ug/ml
Positive Control: HCT15 Whole Cell ZFYVE21 is supported by BioGPS gene expression data to be expressed in HCT15