

## Product datasheet for **TA358301**

### UBE2Z Rabbit Polyclonal Antibody

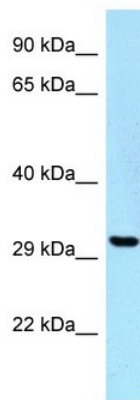
#### Product data:

Product Type:	Primary Antibodies
Applications:	WB
Reactivity:	Human
Host:	Rabbit
Clonality:	Polyclonal
Specificity:	<b>Expected reactivity:</b> Cow, Dog, Guinea Pig, Horse, Human, Mouse, Pig, Rabbit, Rat <b>Homology:</b> Cow: 93%; Dog: 100%; Guinea Pig: 86%; Horse: 100%; Human: 100%; Mouse: 100%; Pig: 100%; Rabbit: 100%; Rat: 100%
Formulation:	Liquid. Purified antibody supplied in 1x PBS buffer with 0.09% (w/v) sodium azide and 2% sucrose. <i>Note that this product is shipped as lyophilized powder to China customers.</i>
Concentration:	lot specific
Purification:	Affinity Purified
Conjugation:	Unconjugated
Storage:	For short term use, store at 2-8°C up to 1 week. For long term storage, store at -20°C in small aliquots to prevent freeze-thaw cycles.
Stability:	Shelf life: one year from despatch.
Predicted Protein Size:	27kDa
Gene Name:	ubiquitin conjugating enzyme E2 Z
Database Link:	<a href="#">NP_075567</a> <a href="#">Entrez Gene 65264 Human</a> <a href="#">Q9H832-2</a>
Background:	Modification of proteins with ubiquitin (UBB; MIM 191339) or ubiquitin-like proteins controls many signaling networks and requires a ubiquitin activating enzyme (E1), a ubiquitin conjugating enzyme (E2), and a ubiquitin protein ligase (E3). UBE2Z is an E2 enzyme .
Synonyms:	FLJ13855; HOYS7; USE1
Protein Pathways:	Acute myeloid leukemia, Pathways in cancer, Ubiquitin mediated proteolysis



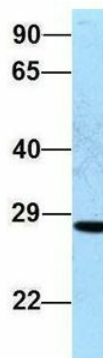
[View online »](#)

Product images:



WB Suggested Anti-UBE2Z Antibody  
Titration: 1.0 ug/ml  
Positive Control: HepG2 Whole Cell

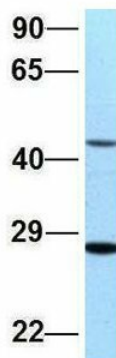
**UBE2Z**



Rabbit Anti-UBE2Z  
Sample Type: Human MCF7  
Antibody Concentration: 1ug/mL

Host: Rabbit  
Target Name: UBE2Z  
Sample Type: Human MCF7  
Antibody Dilution: 1.0ug/ml UBE2Z is supported by BioGPS gene expression data to be expressed in MCF7

**UBE2Z**



Rabbit Anti-UBE2Z  
Sample Type: Human 721\_B  
Antibody Concentration: 1ug/mL

Host: Rabbit  
Target Name: UBE2Z  
Sample Type: Human 721\_B  
Antibody Dilution: 1.0ug/ml UBE2Z is supported by BioGPS gene expression data to be expressed in 721\_B