

## Product datasheet for **TA358299**

### TTLL3 Rabbit Polyclonal Antibody

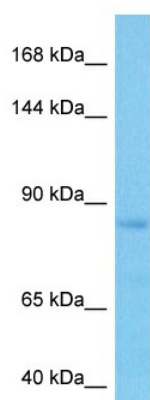
#### Product data:

Product Type:	Primary Antibodies
Applications:	WB
Reactivity:	Human
Host:	Rabbit
Clonality:	Polyclonal
Immunogen:	The immunogen is a synthetic peptide directed towards the N terminal region of human TTLL3
Specificity:	<b>Expected reactivity:</b> Human <b>Homology:</b> Human: 100%
Formulation:	Liquid. Purified antibody supplied in 1x PBS buffer with 0.09% (w/v) sodium azide and 2% sucrose.
Concentration:	lot specific
Purification:	Affinity purified
Conjugation:	Unconjugated
Storage:	For short term use, store at 2-8°C up to 1 week. For long term storage, store at -20°C in small aliquots to prevent freeze-thaw cycles.
Stability:	Shelf life: one year from despatch.
Predicted Protein Size:	84 kDa
Gene Name:	tubulin tyrosine ligase like 3
Database Link:	<a href="#">NP_001021100</a> <a href="#">Entrez Gene 26140 Human</a> <a href="#">Q9Y4R7</a>
Background:	Monoglycylase which modifies alpha- and beta-tubulin, generating side chains of glycine on the gamma-carboxyl groups of specific glutamate residues within the C-terminal tail of alpha- and beta-tubulin. Involved in the side-chain initiation step of the glycylation reaction by adding a single glycine chain to generate monoglycine side chains. Not involved in elongation step of the polyglycylation reaction.
Synonyms:	DKFZp434B103; DKFZp686D076; FLJ13898; HOTTL; MGC120529; MGC120530; MGC120532



[View online »](#)

## Product images:



Host: Rabbit  
Target Name: TTLL3  
Sample Type: OVCAR-3 Cell Lysate  
Antibody Dilution: 1.0µg/ml

Host: Rabbit  
Target Name: TTLL3  
Sample Tissue: Human OVCAR-3 Whole Cell lysates  
Antibody Dilution: 3ug/ml