

Product datasheet for **TA358297**

POLR1F Rabbit Polyclonal Antibody

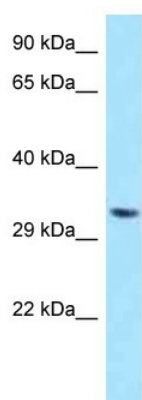
Product data:

Product Type:	Primary Antibodies
Applications:	WB
Reactivity:	Human
Host:	Rabbit
Clonality:	Polyclonal
Specificity:	Expected reactivity: Horse, Human, Rabbit Homology: Horse: 83%; Human: 100%; Rabbit: 92%
Formulation:	Liquid. Purified antibody supplied in 1x PBS buffer with 0.09% (w/v) sodium azide and 2% sucrose. <i>Note that this product is shipped as lyophilized powder to China customers.</i>
Concentration:	lot specific
Purification:	Affinity Purified
Conjugation:	Unconjugated
Storage:	For short term use, store at 2-8°C up to 1 week. For long term storage, store at -20°C in small aliquots to prevent freeze-thaw cycles.
Stability:	Shelf life: one year from despatch.
Predicted Protein Size:	37kDa
Gene Name:	TWIST neighbor
Database Link:	NP_001002926 Entrez Gene 221830 Human Q3B726
Background:	DNA-dependent RNA polymerase catalyzes the transcription of DNA into RNA using the four ribonucleoside triphosphates as substrates. TWISTNB is a component of RNA polymerase I which synthesizes ribosomal RNA precursors. Through its association with RRN3/TIF-1A may be involved in recruitment of Pol I to rDNA promoters.
Synonyms:	TWISTNB



[View online »](#)

Product images:



WB Suggested Anti-TWISTNB Antibody
Titration: 1.0 ug/ml
Positive Control: HepG2 Whole Cell