

Product datasheet for **TA358294**

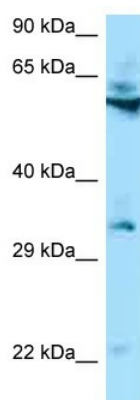
TMEM192 Rabbit Polyclonal Antibody

Product data:

Product Type:	Primary Antibodies
Applications:	WB
Reactivity:	Human
Host:	Rabbit
Clonality:	Polyclonal
Specificity:	Expected reactivity: Cow, Dog, Guinea Pig, Horse, Human, Mouse, Pig, Rabbit, Rat Homology: Cow: 93%; Dog: 93%; Guinea Pig: 79%; Horse: 93%; Human: 100%; Mouse: 85%; Pig: 93%; Rabbit: 100%; Rat: 85%
Formulation:	Liquid. Purified antibody supplied in 1x PBS buffer with 0.09% (w/v) sodium azide and 2% sucrose. <i>Note that this product is shipped as lyophilized powder to China customers.</i>
Concentration:	lot specific
Purification:	Affinity Purified
Conjugation:	Unconjugated
Storage:	For short term use, store at 2-8°C up to 1 week. For long term storage, store at -20°C in small aliquots to prevent freeze-thaw cycles.
Stability:	Shelf life: one year from despatch.
Predicted Protein Size:	31kDa
Gene Name:	transmembrane protein 192
Database Link:	NP_001093859 Entrez Gene 201931 Human Q8IY95
Background:	The function of this protein remains unknown.
Synonyms:	FLJ38482
Protein Families:	Transmembrane



[View online »](#)

Product images:

WB Suggested Anti-TMEM192 Antibody
Titration: 1.0 ug/ml
Positive Control: HCT15 Whole Cell