

## Product datasheet for **TA358288**

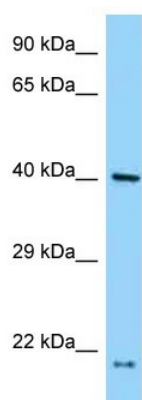
### PRP18 homolog (PRPF18) Rabbit Polyclonal Antibody

#### Product data:

Product Type:	Primary Antibodies
Applications:	WB
Reactivity:	Human
Host:	Rabbit
Clonality:	Polyclonal
Specificity:	<b>Expected reactivity:</b> Cow, Dog, Guinea Pig, Horse, Human, Mouse, Rabbit, Rat <b>Homology:</b> Cow: 93%; Dog: 100%; Guinea Pig: 100%; Horse: 100%; Human: 100%; Mouse: 93%; Rabbit: 100%; Rat: 100%
Formulation:	Liquid. Purified antibody supplied in 1x PBS buffer with 0.09% (w/v) sodium azide and 2% sucrose. <i>Note that this product is shipped as lyophilized powder to China customers.</i>
Concentration:	lot specific
Purification:	Affinity Purified
Conjugation:	Unconjugated
Storage:	For short term use, store at 2-8°C up to 1 week. For long term storage, store at -20°C in small aliquots to prevent freeze-thaw cycles.
Stability:	Shelf life: one year from despatch.
Predicted Protein Size:	38kDa
Gene Name:	pre-mRNA processing factor 18
Database Link:	<a href="#">NP_003666</a> <a href="#">Entrez Gene 8559 Human</a> <a href="#">Q99633</a>
Background:	Pre-mRNA splicing occurs in 2 sequential transesterification steps. The protein encoded by this gene is found to be essential for the catalytic step II in pre-mRNA splicing process. It is found in the spliceosome, and contains seven WD repeats, which function in protein-protein interactions. This protein has a sequence similarity to the yeast splicing factor Prp18.
Synonyms:	FLJ10210; hPrp18; PRP18
Protein Pathways:	Spliceosome



[View online »](#)

**Product images:**

WB Suggested Anti-PRPF18 Antibody  
Titration: 1.0 ug/ml  
Positive Control: NCI-H226 Whole Cell PRPF18 is strongly supported by BioGPS gene expression data to be expressed in NCI-H226