

## Product datasheet for **TA358287**

### PPP1R3C Rabbit Polyclonal Antibody

#### Product data:

Product Type:	Primary Antibodies
Applications:	WB
Reactivity:	Human
Host:	Rabbit
Clonality:	Polyclonal
Specificity:	<b>Expected reactivity:</b> Dog, Horse, Human, Pig, Rabbit <b>Homology:</b> Dog: 79%; Horse: 79%; Human: 100%; Pig: 79%; Rabbit: 79%
Formulation:	Liquid. Purified antibody supplied in 1x PBS buffer with 0.09% (w/v) sodium azide and 2% sucrose. <i>Note that this product is shipped as lyophilized powder to China customers.</i>
Concentration:	lot specific
Purification:	Affinity Purified
Conjugation:	Unconjugated
Storage:	For short term use, store at 2-8°C up to 1 week. For long term storage, store at -20°C in small aliquots to prevent freeze-thaw cycles.
Stability:	Shelf life: one year from despatch.
Predicted Protein Size:	35kDa
Gene Name:	protein phosphatase 1 regulatory subunit 3C
Database Link:	<a href="#">NP_005389</a> <a href="#">Entrez Gene 5507 Human</a> <a href="#">Q9UQK1</a>
Background:	Protein phosphatase-1 participates in the regulation of a wide variety of cellular functions by reversible protein phosphorylation. The ability of PP1 to regulate diverse functions resides in its capacity to interact with a variety of regulatory subunits that may target PP1 to specific subcellular locations, modulate its substrate specificity, and allow its activity to be responsive to extracellular signals. Several targeting subunits of PP1 have been identified, including PPP1R5, the glycogen-binding subunits PPP1R3 and PPP1R4, and the nuclear inhibitor of PP1.
Synonyms:	PPP1R5; PTG; R5

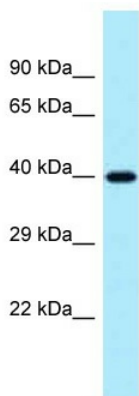


[View online »](#)

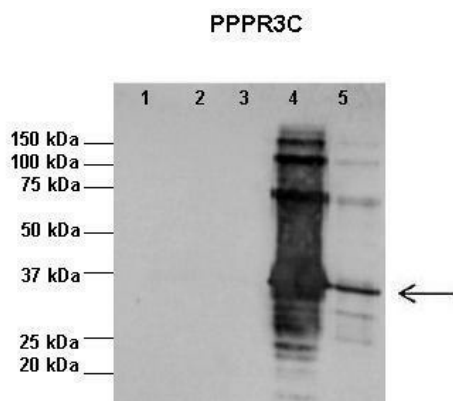
Protein Families: Druggable Genome

Protein Pathways: Insulin signaling pathway

**Product images:**



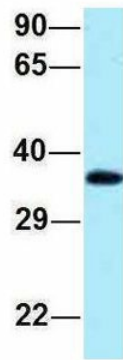
WB Suggested Anti-PPP1R3<sup>C</sup> Antibody  
 Titration: 1.0 ug/ml  
 Positive Control: 293T Whole Cell



Lanes:  
 1:1ug insoluble STUB1 protein, 2:1ug soluble STUB1 protein, 3:1ug EPM2A protein, 4:1ug insoluble PPP1R3<sup>C</sup> protein, 5:1ug soluble PPP1R3<sup>C</sup> protein  
 Primary Antibody Dilution: 1:1000  
 Secondary Antibody: Anti-rabbit-AP  
 Secondary Antibody Dilution: 1:20,000  
 Gene Name: PPP1R3C  
 Submitted by: Pedro Castanheira, Biocant

See Immunoblot 2 Data and customer Feedback for more Information

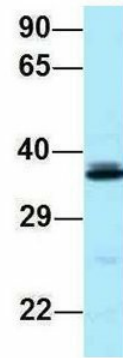
### PPP1R3C



Rabbit Anti-PPP1R3C  
Sample Type: Human Fetal Lung  
Antibody Concentration: 1ug/mL

Host: Rabbit  
Target Name: PPP1R3C  
Sample Type: Human Fetal Lung  
Antibody Dilution: 1.0ug/ml

### PPP1R3C



Rabbit Anti-PPP1R3C  
Sample Type: Human Adult Placenta  
Antibody Concentration: 1ug/mL

Host: Rabbit  
Target Name: PPP1R3C  
Sample Type: Human Adult Placenta  
Antibody Dilution: 1.0ug/ml