

Product datasheet for **TA358283**

MRPL46 Rabbit Polyclonal Antibody

Product data:

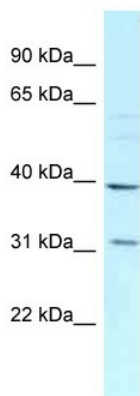
Product Type:	Primary Antibodies
Applications:	WB
Reactivity:	Human
Host:	Rabbit
Clonality:	Polyclonal
Specificity:	Expected reactivity: Cow, Dog, Guinea Pig, Horse, Human, Mouse, Rabbit, Rat Homology: Cow: 92%; Dog: 92%; Guinea Pig: 100%; Horse: 92%; Human: 100%; Mouse: 85%; Rabbit: 77%; Rat: 92%
Formulation:	Liquid. Purified antibody supplied in 1x PBS buffer with 0.09% (w/v) sodium azide and 2% sucrose.
Concentration:	lot specific
Purification:	Affinity Purified
Conjugation:	Unconjugated
Storage:	For short term use, store at 2-8°C up to 1 week. For long term storage, store at -20°C in small aliquots to prevent freeze-thaw cycles.
Stability:	Shelf life: one year from despatch.
Predicted Protein Size:	31kDa
Gene Name:	mitochondrial ribosomal protein L46
Database Link:	NP_071446 Entrez Gene 26589 Human Q9H2W6
Background:	Mammalian mitochondrial ribosomal proteins are encoded by nuclear genes and help in protein synthesis within the mitochondrion. Mitochondrial ribosomes (mitoribosomes) consist of a small 28S subunit and a large 39S subunit. They have an estimated 75% protein to rRNA composition compared to prokaryotic ribosomes, where this ratio is reversed. Another difference between mammalian mitoribosomes and prokaryotic ribosomes is that the latter contain a 5S rRNA. Among different species, the proteins comprising the mitoribosome differ greatly in sequence, and sometimes in biochemical properties, which prevents easy recognition by sequence homology. This gene encodes a 39S subunit protein.



[View online »](#)

Synonyms: C15orf4; L46mt; LIECG2; MGC22762; MRP-L46; P2ECSL

Product images:



WB Suggested Anti-MRPL46 Antibody
 Titration: 1.0 ug/ml
 Positive Control: Hela Whole Cell
 MRPL46 is supported by BioGPS gene expression data to be expressed in HeLa