

Product datasheet for **TA358275**

MTUS2 Rabbit Polyclonal Antibody

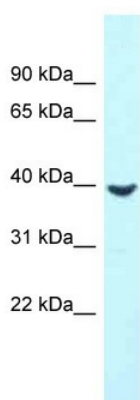
Product data:

| | |
|-------------------------|--|
| Product Type: | Primary Antibodies |
| Applications: | WB |
| Reactivity: | Human |
| Host: | Rabbit |
| Clonality: | Polyclonal |
| Specificity: | Expected reactivity: Cow, Dog, Guinea Pig, Horse, Human, Mouse, Rabbit, Rat, Zebrafish Homology: Cow: 100%; Dog: 100%; Guinea Pig: 100%; Horse: 100%; Human: 100%; Mouse: 100%; Rabbit: 100%; Rat: 100%; Zebrafish: 86% |
| Formulation: | Liquid. Purified antibody supplied in 1x PBS buffer with 0.09% (w/v) sodium azide and 2% sucrose. |
| Concentration: | lot specific |
| Purification: | Affinity Purified |
| Conjugation: | Unconjugated |
| Storage: | For short term use, store at 2-8°C up to 1 week. For long term storage, store at -20°C in small aliquots to prevent freeze-thaw cycles. |
| Stability: | Shelf life: one year from despatch. |
| Predicted Protein Size: | 38kDa |
| Gene Name: | microtubule associated tumor suppressor candidate 2 |
| Database Link: | NP_056048 Entrez Gene 23281 Human Q5JR59-3 |
| Background: | MTUS2 binds microtubules. MTUS2 together with MAPRE1 may target the microtubule depolymerase KIF2C to the plus-end of microtubules. It may regulate the dynamics of microtubules at their growing distal tip. |
| Synonyms: | 5730592G18Rik; A730013O20Rik; AU067634; C130038G02Rik; Cazip; Gm763; mKIAA0774 |



[View online »](#)

Product images:



WB Suggested Anti-MTUS2 Antibody
Titration: 1.0 ug/ml
Positive Control: Fetal Liver