

Product datasheet for **TA358268**

GPR52 Rabbit Polyclonal Antibody

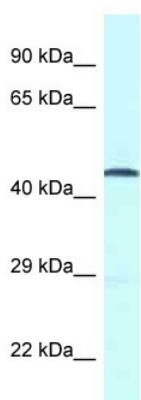
Product data:

Product Type:	Primary Antibodies
Applications:	WB
Reactivity:	Human
Host:	Rabbit
Clonality:	Polyclonal
Specificity:	Expected reactivity: Cow, Guinea Pig, Human, Mouse, Pig, Rat Homology: Cow: 79%; Guinea Pig: 79%; Human: 100%; Mouse: 85%; Pig: 86%; Rat: 77%
Formulation:	Liquid. Purified antibody supplied in 1x PBS buffer with 0.09% (w/v) sodium azide and 2% sucrose.
Concentration:	lot specific
Purification:	Affinity Purified
Conjugation:	Unconjugated
Storage:	For short term use, store at 2-8°C up to 1 week. For long term storage, store at -20°C in small aliquots to prevent freeze-thaw cycles.
Stability:	Shelf life: one year from despatch.
Predicted Protein Size:	40kDa
Gene Name:	G protein-coupled receptor 52
Database Link:	NP_005675 Entrez Gene 9293 Human Q9Y2T5
Background:	Members of the G protein-coupled receptor (GPR) family play important roles in signal transduction from the external environment to the inside of the cell.
Synonyms:	MGC111751
Protein Families:	Druggable Genome, GPCR, Transmembrane



[View online »](#)

Product images:



WB Suggested Anti-GPR52 Antibody
Titration: 1.0 ug/ml
Positive Control: Fetal Heart