

Product datasheet for **TA358261**

FBXL8 Rabbit Polyclonal Antibody

Product data:

Product Type:	Primary Antibodies
Applications:	WB
Reactivity:	Human
Host:	Rabbit
Clonality:	Polyclonal
Specificity:	Expected reactivity: Cow, Dog, Guinea Pig, Horse, Human, Mouse, Pig, Rat Homology: Cow: 93%; Dog: 100%; Guinea Pig: 92%; Horse: 100%; Human: 100%; Mouse: 100%; Pig: 93%; Rat: 100%
Formulation:	Liquid. Purified antibody supplied in 1x PBS buffer with 0.09% (w/v) sodium azide and 2% sucrose.
Concentration:	lot specific
Purification:	Affinity Purified
Conjugation:	Unconjugated
Storage:	For short term use, store at 2-8°C up to 1 week. For long term storage, store at -20°C in small aliquots to prevent freeze-thaw cycles.
Stability:	Shelf life: one year from despatch.
Predicted Protein Size:	40kDa
Gene Name:	F-box and leucine-rich repeat protein 8
Database Link:	NP_060848 Entrez Gene 55336 Human Q96CD0
Background:	This gene encodes a member of the F-box protein family which is characterized by an approximately 40 amino acid motif, the F-box. The F-box proteins constitute one of the four subunits of the ubiquitin protein ligase complex called SCFs (SKP1-cullin-F-box), which function in phosphorylation-dependent ubiquitination. The F-box proteins are divided into 3 classes: Fbws containing WD-40 domains, Fbls containing leucine-rich repeats, and Fbxs containing either different protein-protein interaction modules or no recognizable motifs. The protein encoded by this gene belongs to the Fbls class. It shares 78% sequence identity with the mouse protein.

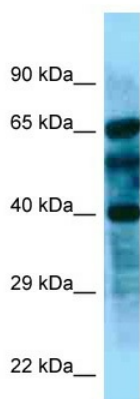


[View online »](#)

Synonyms: FBL8; FLJ11278; MGC19959

Protein Families: Druggable Genome

Product images:



WB Suggested Anti-FBXL8 Antibody
Titration: 1.0 ug/ml
Positive Control: Fetal kidney