

Product datasheet for **TA358259**

DACT1 Rabbit Polyclonal Antibody

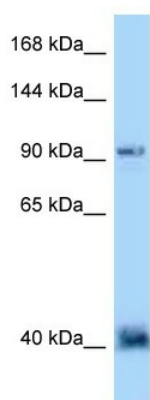
Product data:

Product Type:	Primary Antibodies
Applications:	WB
Reactivity:	Human
Host:	Rabbit
Clonality:	Polyclonal
Specificity:	Expected reactivity: Cow, Dog, Guinea Pig, Human, Mouse, Rabbit, Rat, Zebrafish Homology: Cow: 93%; Dog: 100%; Guinea Pig: 86%; Human: 100%; Mouse: 100%; Rabbit: 100%; Rat: 100%; Zebrafish: 85%
Formulation:	Liquid. Purified antibody supplied in 1x PBS buffer with 0.09% (w/v) sodium azide and 2% sucrose. <i>Note that this product is shipped as lyophilized powder to China customers.</i>
Concentration:	lot specific
Purification:	Affinity Purified
Conjugation:	Unconjugated
Storage:	For short term use, store at 2-8°C up to 1 week. For long term storage, store at -20°C in small aliquots to prevent freeze-thaw cycles.
Stability:	Shelf life: one year from despatch.
Predicted Protein Size:	92kDa
Gene Name:	dishevelled binding antagonist of beta catenin 1
Database Link:	NP_057735 Entrez Gene 51339 Human Q9NYF0
Background:	DACT1 positively regulates DVL2-mediated signaling pathways during development. It binds to DVL2 and impedes the degradation of CTNNB1/beta-catenin, thereby enhancing the transcriptional activation of target genes of the Wnt signaling pathway.
Synonyms:	DAPPER; DAPPER1; DPR1; FRODO; HDPR1; HNG3; THYEX3



[View online »](#)

Product images:



WB Suggested Anti-DACT1 Antibody
Titration: 1.0 ug/ml
Positive Control: MDA-MB-4355 Whole Cell