

Product datasheet for **TA358258**

CRISPLD1 Rabbit Polyclonal Antibody

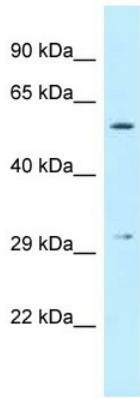
Product data:

Product Type:	Primary Antibodies
Applications:	WB
Reactivity:	Human
Host:	Rabbit
Clonality:	Polyclonal
Specificity:	Expected reactivity: Cow, Dog, Guinea Pig, Horse, Human, Mouse, Rabbit, Rat, Yeast Homology: Cow: 79%; Dog: 100%; Guinea Pig: 93%; Horse: 86%; Human: 100%; Mouse: 93%; Rabbit: 100%; Rat: 93%; Yeast: 82%
Formulation:	Liquid. Purified antibody supplied in 1x PBS buffer with 0.09% (w/v) sodium azide and 2% sucrose.
Concentration:	lot specific
Purification:	Affinity Purified
Conjugation:	Unconjugated
Storage:	For short term use, store at 2-8°C up to 1 week. For long term storage, store at -20°C in small aliquots to prevent freeze-thaw cycles.
Stability:	Shelf life: one year from despatch.
Predicted Protein Size:	55kDa
Gene Name:	cysteine rich secretory protein LCCL domain containing 1
Database Link:	NP_113649 Entrez Gene 83690 Human Q9H336
Background:	The function of this protein remains unknown.
Synonyms:	Cocoacrisp; CRISP-10; CRISP10; DKFZp762F133; LCRISP1
Protein Families:	Secreted Protein

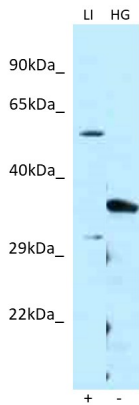


[View online »](#)

Product images:



WB Suggested Anti-CRISPLD1 Antibody
 Titration: 1.0 ug/ml
 Positive Control: Fetal Liver



Host: Rabbit
 Target name: CRISPLD1
 Positive control: ~25ug Human Liver (LI)
 Negative control: ~25ug HepG2 Cell Lysate (HG)
 Antibody concentration: 1ug/ml

Host: Rabbit
 Target: CRISPLD1
 Positive control (+): Human Liver (LI)
 Negative control (-): HepG2 Cell Lysate (HG)
 Antibody concentration: 1ug/ml