

## Product datasheet for **TA358257**

### CDC20B Rabbit Polyclonal Antibody

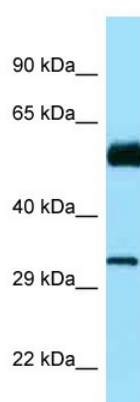
#### Product data:

Product Type:	Primary Antibodies
Applications:	WB
Reactivity:	Human
Host:	Rabbit
Clonality:	Polyclonal
Specificity:	<b>Expected reactivity:</b> Dog, Guinea Pig, Horse, Human, Rabbit <b>Homology:</b> Dog: 77%; Guinea Pig: 92%; Horse: 85%; Human: 100%; Rabbit: 100%
Formulation:	Liquid. Purified antibody supplied in 1x PBS buffer with 0.09% (w/v) sodium azide and 2% sucrose.
Concentration:	lot specific
Purification:	Affinity Purified
Conjugation:	Unconjugated
Storage:	For short term use, store at 2-8°C up to 1 week. For long term storage, store at -20°C in small aliquots to prevent freeze-thaw cycles.
Stability:	Shelf life: one year from despatch.
Predicted Protein Size:	57kDa
Gene Name:	cell division cycle 20B
Database Link:	<a href="#">NP_689836</a> <a href="#">Entrez Gene 166979 Human</a> <a href="#">Q86Y33-2</a>
Background:	The function of this protein remains unknown.
Synonyms:	FLJ37927; G6VTS76519
Protein Families:	Druggable Genome



[View online »](#)

## Product images:



WB Suggested Anti-CDC20B Antibody  
Titration: 1.0 ug/ml  
Positive Control: Fetal Brain