

## Product datasheet for **TA358253**

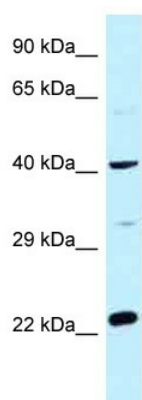
### CCDC68 Rabbit Polyclonal Antibody

#### Product data:

Product Type:	Primary Antibodies
Applications:	WB
Reactivity:	Human
Host:	Rabbit
Clonality:	Polyclonal
Specificity:	<b>Expected reactivity:</b> Cow, Dog, Human, Rat <b>Homology:</b> Cow: 90%; Dog: 77%; Human: 100%; Rat: 100%
Formulation:	Liquid. Purified antibody supplied in 1x PBS buffer with 0.09% (w/v) sodium azide and 2% sucrose.
Concentration:	lot specific
Purification:	Affinity Purified
Conjugation:	Unconjugated
Storage:	For short term use, store at 2-8°C up to 1 week. For long term storage, store at -20°C in small aliquots to prevent freeze-thaw cycles.
Stability:	Shelf life: one year from despatch.
Predicted Protein Size:	37kDa
Gene Name:	coiled-coil domain containing 68
Database Link:	<a href="#">NP_079490</a> <a href="#">Entrez Gene 80323 Human</a> <a href="#">Q9H2F9</a>
Background:	The function of this protein remains unknown.
Synonyms:	FLJ25368; OTTHUMP00000163560; SE57-1



[View online »](#)

**Product images:**

WB Suggested Anti-CCDC68 Antibody  
Titration: 1.0 ug/ml  
Positive Control: Fetal Heart