

Product datasheet for **TA358251**

ARL10 Rabbit Polyclonal Antibody

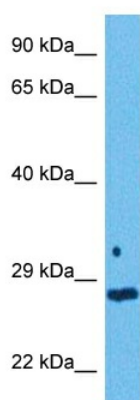
Product data:

Product Type:	Primary Antibodies
Applications:	WB
Reactivity:	Human
Host:	Rabbit
Clonality:	Polyclonal
Immunogen:	The immunogen is a synthetic peptide directed towards the N terminal region of human ARL10
Specificity:	Expected reactivity: Human Homology: Cow: 86%; Guinea Pig: 100%; Human: 100%; Mouse: 100%; Rabbit: 86%; Rat: 100%
Formulation:	Liquid. Purified antibody supplied in 1x PBS buffer with 0.09% (w/v) sodium azide and 2% sucrose. <i>Note that this product is shipped as lyophilized powder to China customers.</i>
Concentration:	lot specific
Purification:	Affinity purified
Conjugation:	Unconjugated
Storage:	For short term use, store at 2-8°C up to 1 week. For long term storage, store at -20°C in small aliquots to prevent freeze-thaw cycles.
Stability:	Shelf life: one year from despatch.
Predicted Protein Size:	27 kDa
Gene Name:	ADP ribosylation factor like GTPase 10
Database Link:	NP_775935 Entrez Gene 285598 Human Q8N8L6
Background:	The function of this protein remains unknown.
Synonyms:	ARL10A; FLJ39249
Protein Families:	Transmembrane



[View online »](#)

Product images:



Host: Rabbit
Target Name: ARL10
Sample Type: Large Intestine Tumor Lysate
Antibody Dilution: 1.0 μ g/ml

Host: Rabbit
Target Name: ARL10
Sample Tissue: Human Large Intestine Tumor lysates
Antibody Dilution: 1 μ g/ml