

Product datasheet for **TA358245**

BUD23 Rabbit Polyclonal Antibody

Product data:

Product Type:	Primary Antibodies
Applications:	WB
Reactivity:	Human
Host:	Rabbit
Clonality:	Polyclonal
Specificity:	Expected reactivity: Cow, Dog, Guinea Pig, Horse, Human, Mouse, Pig, Rabbit, Rat Homology: Cow: 77%; Dog: 86%; Guinea Pig: 79%; Horse: 86%; Human: 100%; Mouse: 86%; Pig: 86%; Rabbit: 93%; Rat: 86%
Formulation:	Liquid. Purified antibody supplied in 1x PBS buffer with 0.09% (w/v) sodium azide and 2% sucrose. <i>Note that this product is shipped as lyophilized powder to China customers.</i>
Concentration:	lot specific
Purification:	Affinity Purified
Conjugation:	Unconjugated
Storage:	For short term use, store at 2-8°C up to 1 week. For long term storage, store at -20°C in small aliquots to prevent freeze-thaw cycles.
Stability:	Shelf life: one year from despatch.
Predicted Protein Size:	32kDa
Gene Name:	Williams-Beuren syndrome chromosome region 22
Database Link:	NP_001189489 Entrez Gene 114049 Human C9K060
Background:	This gene encodes a protein containing a nuclear localization signal and an S-adenosyl-L-methionine binding motif typical of methyltransferases, suggesting that the encoded protein may act on DNA methylation. This gene is deleted in Williams syndrome, a multisystem developmental disorder caused by the deletion of contiguous genes at 7q11.23. Alternatively spliced transcript variants have been found.
Synonyms:	HASJ4442; HUSSY-3; MGC2022; MGC5140; MGC19709; PP3381; WBMT

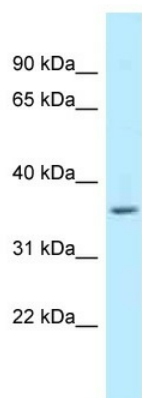


[View online »](#)

Protein Families: Druggable Genome

Protein Pathways: Androgen and estrogen metabolism, Histidine metabolism, Selenoamino acid metabolism, Tyrosine metabolism

Product images:



WB Suggested Anti-WBSCR22 Antibody
Titration: 1.0 ug/ml
Positive Control: Fetal Liver