

Product datasheet for **TA358244**

SQOR Rabbit Polyclonal Antibody

Product data:

| | |
|-------------------------|--|
| Product Type: | Primary Antibodies |
| Applications: | WB |
| Reactivity: | Human |
| Host: | Rabbit |
| Clonality: | Polyclonal |
| Specificity: | Expected reactivity: Cow, Dog, Horse, Human, Mouse, Pig, Rabbit, Rat, Zebrafish Homology: Cow: 93%; Dog: 100%; Horse: 100%; Human: 100%; Mouse: 93%; Pig: 93%; Rabbit: 100%; Rat: 100%; Zebrafish: 79% |
| Formulation: | Liquid. Purified antibody supplied in 1x PBS buffer with 0.09% (w/v) sodium azide and 2% sucrose. <i>Note that this product is shipped as lyophilized powder to China customers.</i> |
| Concentration: | lot specific |
| Purification: | Affinity Purified |
| Conjugation: | Unconjugated |
| Storage: | For short term use, store at 2-8°C up to 1 week. For long term storage, store at -20°C in small aliquots to prevent freeze-thaw cycles. |
| Stability: | Shelf life: one year from despatch. |
| Predicted Protein Size: | 50kDa |
| Gene Name: | sulfide quinone reductase-like (yeast) |
| Database Link: | NP_067022 Entrez Gene 58472 Human Q9Y6N5 |
| Background: | The protein encoded by this gene may function in mitochondria to catalyze the conversion of sulfide to persulfides, thereby decreasing toxic concentrations of sulfide. Alternative splicing results in multiple transcript variants that encode the same protein. |
| Synonyms: | CGI-44 |
| Protein Families: | Druggable Genome |

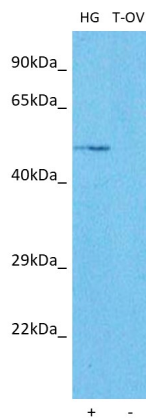


[View online »](#)

Product images:



WB Suggested Anti-SQRDL Antibody
Titration: 1.0 ug/ml
Positive Control: HepG2 Whole Cell



Host: Rabbit
Target name: SQRDL
Positive control: ~25ug HepG2 Cell Lysate (HG)
Negative control: ~25ug Ovary Tumor (T-OV)
Antibody concentration: 0.5ug/ml

Host: Rabbit
Target: SQRDL
Positive control (+): HepG2 (HG)
Negative control (-): Ovary tumor (T-OV)
Antibody concentration: 0.5ug/ml