

Product datasheet for **TA358241**

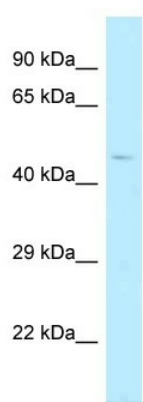
TBC1D20 Rabbit Polyclonal Antibody

Product data:

Product Type:	Primary Antibodies
Applications:	WB
Reactivity:	Human
Host:	Rabbit
Clonality:	Polyclonal
Specificity:	Expected reactivity: Cow, Dog, Guinea Pig, Horse, Human, Mouse, Pig, Rabbit, Rat Homology: Cow: 86%; Dog: 86%; Guinea Pig: 86%; Horse: 100%; Human: 100%; Mouse: 93%; Pig: 100%; Rabbit: 93%; Rat: 93%
Formulation:	Liquid. Purified antibody supplied in 1x PBS buffer with 0.09% (w/v) sodium azide and 2% sucrose.
Concentration:	lot specific
Purification:	Affinity Purified
Conjugation:	Unconjugated
Storage:	For short term use, store at 2-8°C up to 1 week. For long term storage, store at -20°C in small aliquots to prevent freeze-thaw cycles.
Stability:	Shelf life: one year from despatch.
Predicted Protein Size:	44kDa
Gene Name:	TBC1 domain family member 20
Database Link:	NP_653229 Entrez Gene 128637 Human Q96BZ9
Background:	TBC1D20 may act as a GTPase-activating protein for Rab family protein(s).
Synonyms:	1110028I04Rik; 2810442O16Rik; AI414693; MGC94895
Protein Families:	Transmembrane



[View online »](#)

Product images:


WB Suggested Anti-TBC1D20 Antibody
 Titration: 1.0 ug/ml
 Positive Control: Fetal Heart