

Product datasheet for **TA358239**

SLAMF1 Rabbit Polyclonal Antibody

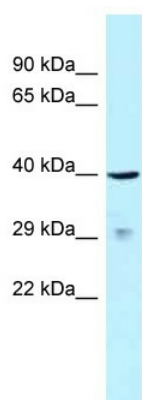
Product data:

| | |
|-------------------------|-----------------------------------------------------------------------------------------------------------------------------------------------------------------------------------------|
| Product Type: | Primary Antibodies |
| Applications: | WB |
| Reactivity: | Human |
| Host: | Rabbit |
| Clonality: | Polyclonal |
| Specificity: | Expected reactivity: Human, Pig Homology: Human: 100%; Pig: 93% |
| Formulation: | Liquid. Purified antibody supplied in 1x PBS buffer with 0.09% (w/v) sodium azide and 2% sucrose. <i>Note that this product is shipped as lyophilized powder to China customers.</i> |
| Concentration: | lot specific |
| Purification: | Affinity Purified |
| Conjugation: | Unconjugated |
| Storage: | For short term use, store at 2-8°C up to 1 week. For long term storage, store at -20°C in small aliquots to prevent freeze-thaw cycles. |
| Stability: | Shelf life: one year from despatch. |
| Predicted Protein Size: | 37kDa |
| Gene Name: | signaling lymphocytic activation molecule family member 1 |
| Database Link: | NP_003028 Entrez Gene 6504 Human B2RAL4 |
| Background: | The function of this protein remains unknown. |
| Synonyms: | CD150; CDw150; IPO-3; SLAM |
| Protein Families: | Druggable Genome, ES Cell Differentiation/IPS, Transmembrane |



[View online »](#)

Product images:



WB Suggested Anti-SLAMF1 Antibody
Titration: 1.0 ug/ml
Positive Control: 721_B Whole Cell
SLAMF1 is supported by BioGPS gene expression data to be expressed in 721_B