

## Product datasheet for **TA358234**

### **P15RS (RPRD1A) Rabbit Polyclonal Antibody**

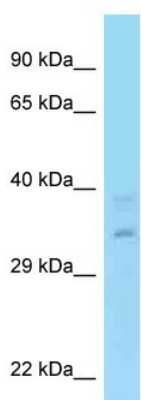
#### Product data:

Product Type:	Primary Antibodies
Applications:	WB
Reactivity:	Human
Host:	Rabbit
Clonality:	Polyclonal
Specificity:	<b>Expected reactivity:</b> Cow, Dog, Guinea Pig, Horse, Human, Mouse, Rabbit, Rat, Zebrafish <b>Homology:</b> Cow: 100%; Dog: 100%; Guinea Pig: 100%; Horse: 100%; Human: 100%; Mouse: 100%; Rabbit: 100%; Rat: 100%; Zebrafish: 86%
Formulation:	Liquid. Purified antibody supplied in 1x PBS buffer with 0.09% (w/v) sodium azide and 2% sucrose.
Concentration:	lot specific
Purification:	Affinity Purified
Conjugation:	Unconjugated
Storage:	For short term use, store at 2-8°C up to 1 week. For long term storage, store at -20°C in small aliquots to prevent freeze-thaw cycles.
Stability:	Shelf life: one year from despatch.
Predicted Protein Size:	34kDa
Gene Name:	regulation of nuclear pre-mRNA domain containing 1A
Database Link:	<a href="#">NP_060640</a> <a href="#">Entrez Gene 55197 Human</a> <a href="#">Q96P16</a>
Background:	P15RS is upregulated in cells overexpressing cyclin-dependent kinase inhibitor p15(INK4b) and may have a role in cell cycle regulation.
Synonyms:	FLJ10656; HsT3101; MGC19513; P15RS



[View online »](#)

## Product images:



WB Suggested Anti-RPRD1A Antibody  
Titration: 1.0 ug/ml  
Positive Control: Fetal Lung