

Product datasheet for **TA358228**

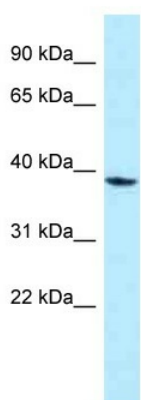
MPPED1 Rabbit Polyclonal Antibody

Product data:

Product Type:	Primary Antibodies
Applications:	WB
Reactivity:	Human
Host:	Rabbit
Clonality:	Polyclonal
Specificity:	Expected reactivity: Cow, Dog, Guinea Pig, Horse, Human, Mouse, Rabbit, Rat, Zebrafish Homology: Cow: 79%; Dog: 100%; Guinea Pig: 100%; Horse: 100%; Human: 100%; Mouse: 100%; Rabbit: 100%; Rat: 100%; Zebrafish: 100%
Formulation:	Liquid. Purified antibody supplied in 1x PBS buffer with 0.09% (w/v) sodium azide and 2% sucrose.
Concentration:	lot specific
Purification:	Affinity Purified
Conjugation:	Unconjugated
Storage:	For short term use, store at 2-8°C up to 1 week. For long term storage, store at -20°C in small aliquots to prevent freeze-thaw cycles.
Stability:	Shelf life: one year from despatch.
Predicted Protein Size:	37kDa
Gene Name:	metallophosphoesterase domain containing 1
Database Link:	NP_001037835 Entrez Gene 758 Human O15442
Background:	MPPED1 may have metallophosphoesterase activity (in vitro).
Synonyms:	239AB; C22orf1; FAM1A; FLJ50009; FLJ54633; FLJ59965; FLJ78907; MGC88045; OTTHUMP00000197847
Protein Families:	Transcription Factors



[View online »](#)

Product images:

WB Suggested Anti-MPPED1 Antibody
Titration: 1.0 ug/ml
Positive Control: Jurkat Whole Cell