

Product datasheet for **TA358225**

LIMCH1 Rabbit Polyclonal Antibody

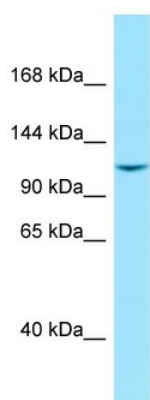
Product data:

Product Type:	Primary Antibodies
Applications:	WB
Reactivity:	Human
Host:	Rabbit
Clonality:	Polyclonal
Specificity:	Expected reactivity: Dog, Human, Mouse, Rabbit, Rat Homology: Dog: 100%; Human: 100%; Mouse: 85%; Rabbit: 92%; Rat: 92%
Formulation:	Liquid. Purified antibody supplied in 1x PBS buffer with 0.09% (w/v) sodium azide and 2% sucrose. <i>Note that this product is shipped as lyophilized powder to China customers.</i>
Concentration:	lot specific
Purification:	Affinity Purified
Conjugation:	Unconjugated
Storage:	For short term use, store at 2-8°C up to 1 week. For long term storage, store at -20°C in small aliquots to prevent freeze-thaw cycles.
Stability:	Shelf life: one year from despatch.
Predicted Protein Size:	121kDa
Gene Name:	LIM and calponin homology domains 1
Database Link:	NP_055803 Entrez Gene 22998 Human Q9UPQ0
Background:	The function of this protein remains unknown.
Synonyms:	DKFZp434I0312; DKFZP686A01247; DKFZp686B2470; DKFZp686G2094; DKFZp686G18243; DKFZp781C1754; DKFZp781I1455; KIAA1102; LIMCH1A; LMO7B; MGC72127



[View online »](#)

Product images:



Host: Rabbit
Target Name: LIMCH1
Antibody Dilution: 1.0ug/ml
Sample Type: THP-1 cell lysate