

Product datasheet for **TA358224**

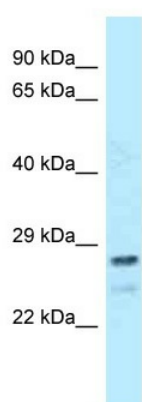
FKBP14 Rabbit Polyclonal Antibody

Product data:

Product Type:	Primary Antibodies
Applications:	WB
Reactivity:	Human
Host:	Rabbit
Clonality:	Polyclonal
Specificity:	Expected reactivity: Cow, Dog, Guinea Pig, Horse, Human, Mouse, Rabbit, Rat, Zebrafish Homology: Cow: 100%; Dog: 100%; Guinea Pig: 100%; Horse: 100%; Human: 100%; Mouse: 100%; Rabbit: 100%; Rat: 100%; Zebrafish: 100%
Formulation:	Liquid. Purified antibody supplied in 1x PBS buffer with 0.09% (w/v) sodium azide and 2% sucrose. <i>Note that this product is shipped as lyophilized powder to China customers.</i>
Concentration:	lot specific
Purification:	Affinity Purified
Conjugation:	Unconjugated
Storage:	For short term use, store at 2-8°C up to 1 week. For long term storage, store at -20°C in small aliquots to prevent freeze-thaw cycles.
Stability:	Shelf life: one year from despatch.
Predicted Protein Size:	23kDa
Gene Name:	FK506 binding protein 14
Database Link:	NP_060416 Entrez Gene 55033 Human Q9NWM8
Background:	PPIases accelerate the folding of proteins during protein synthesis.
Synonyms:	FKBP-22; FKBP22; FLJ20731; PPIase; Rotamase
Protein Families:	Druggable Genome



[View online »](#)

Product images:

WB Suggested Anti-FKBP14 Antibody
Titration: 1.0 ug/ml
Positive Control: HeLa Whole CellFKBP14 is supported by BioGPS gene expression data to be expressed in HeLa