

## Product datasheet for **TA358217**

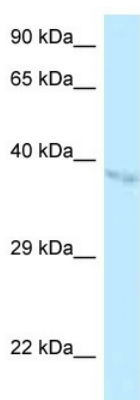
### BZW1 Rabbit Polyclonal Antibody

#### Product data:

Product Type:	Primary Antibodies
Applications:	WB
Reactivity:	Human
Host:	Rabbit
Clonality:	Polyclonal
Specificity:	<b>Expected reactivity:</b> Cow, Dog, Guinea Pig, Horse, Human, Mouse, Rabbit, Rat, Zebrafish <b>Homology:</b> Cow: 100%; Dog: 100%; Guinea Pig: 100%; Horse: 100%; Human: 100%; Mouse: 100%; Rabbit: 100%; Rat: 100%; Zebrafish: 100%
Formulation:	Liquid. Purified antibody supplied in 1x PBS buffer with 0.09% (w/v) sodium azide and 2% sucrose.
Concentration:	lot specific
Purification:	Affinity Purified
Conjugation:	Unconjugated
Storage:	For short term use, store at 2-8°C up to 1 week. For long term storage, store at -20°C in small aliquots to prevent freeze-thaw cycles.
Stability:	Shelf life: one year from despatch.
Predicted Protein Size:	39kDa
Gene Name:	basic leucine zipper and W2 domains 1
Database Link:	<a href="#">NP_079389</a> <a href="#">Entrez Gene 80183 Human</a> <a href="#">Entrez Gene 9689 Human</a> <a href="#">Q9H714</a>
Background:	The function of this protein remains unknown.
Synonyms:	BZAP45; KIAA0005; Nbla10236



[View online »](#)

**Product images:**

WB Suggested Anti-BZW1 Antibody  
Titration: 1.0 ug/ml  
Positive Control: HepG2 Whole Cell BZW1 is supported by BioGPS gene expression data to be expressed in HepG2