

Product datasheet for **TA358215**

PP4R1 (PPP4R1) Rabbit Polyclonal Antibody

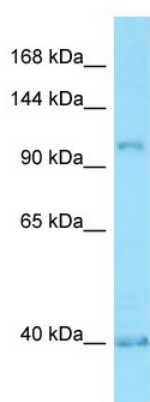
Product data:

Product Type:	Primary Antibodies
Applications:	WB
Reactivity:	Human
Host:	Rabbit
Clonality:	Polyclonal
Specificity:	Expected reactivity: Dog, Horse, Human, Pig, Rabbit Homology: Dog: 93%; Horse: 100%; Human: 100%; Pig: 85%; Rabbit: 79%
Formulation:	Liquid. Purified antibody supplied in 1x PBS buffer with 0.09% (w/v) sodium azide and 2% sucrose.
Concentration:	lot specific
Purification:	Affinity Purified
Conjugation:	Unconjugated
Storage:	For short term use, store at 2-8°C up to 1 week. For long term storage, store at -20°C in small aliquots to prevent freeze-thaw cycles.
Stability:	Shelf life: one year from despatch.
Predicted Protein Size:	107kDa
Gene Name:	protein phosphatase 4 regulatory subunit 1
Database Link:	NP_001035847 Entrez Gene 9989 Human Q8TF05
Background:	PPP4R1 is a regulatory subunit of serine/threonine-protein phosphatase 4. PPP4R1 may play a role in regulation of cell division in renal glomeruli. The PPP4C-PPP4R1 PP4 complex may play a role in dephosphorylation and regulation of HDAC3.
Synonyms:	MEG1; PP4(Rmeg); PP4R1
Protein Families:	Druggable Genome, Phosphatase



[View online »](#)

Product images:



Host: Rabbit
Target Name: PPP4R1
Antibody Dilution: 1.0ug/ml
Sample Type: HT1080 cell lysate