

## Product datasheet for **TA358213**

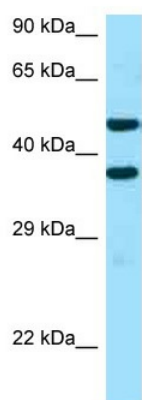
### SFXN2 Rabbit Polyclonal Antibody

#### Product data:

Product Type:	Primary Antibodies
Applications:	WB
Reactivity:	Human
Host:	Rabbit
Clonality:	Polyclonal
Specificity:	<b>Expected reactivity:</b> Cow, Dog, Horse, Human, Mouse, Pig <b>Homology:</b> Cow: 92%; Dog: 92%; Horse: 92%; Human: 100%; Mouse: 85%; Pig: 85%
Formulation:	Liquid. Purified antibody supplied in 1x PBS buffer with 0.09% (w/v) sodium azide and 2% sucrose. <i>Note that this product is shipped as lyophilized powder to China customers.</i>
Concentration:	lot specific
Purification:	Affinity Purified
Conjugation:	Unconjugated
Storage:	For short term use, store at 2-8°C up to 1 week. For long term storage, store at -20°C in small aliquots to prevent freeze-thaw cycles.
Stability:	Shelf life: one year from despatch.
Predicted Protein Size:	35kDa
Gene Name:	sideroflexin 2
Database Link:	<a href="#">NP_849189</a> <a href="#">Entrez Gene 118980 Human</a> <a href="#">Q96NB2</a>
Background:	SFXN2 is a potential iron transporter.
Synonyms:	SFXN2
Protein Families:	Transmembrane



[View online »](#)

**Product images:**

WB Suggested Anti-SFXN2 Antibody  
Titration: 1.0 ug/ml  
Positive Control: NCI-H226 Whole Cell