

Product datasheet for **TA358209**

MTFR1 Rabbit Polyclonal Antibody

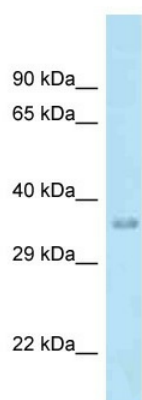
Product data:

Product Type:	Primary Antibodies
Applications:	WB
Reactivity:	Human
Host:	Rabbit
Clonality:	Polyclonal
Specificity:	Expected reactivity: Dog, Horse, Human, Mouse, Pig, Rabbit, Rat Homology: Dog: 86%; Horse: 79%; Human: 100%; Mouse: 79%; Pig: 79%; Rabbit: 86%; Rat: 79%
Formulation:	Liquid. Purified antibody supplied in 1x PBS buffer with 0.09% (w/v) sodium azide and 2% sucrose.
Concentration:	lot specific
Purification:	Affinity Purified
Conjugation:	Unconjugated
Storage:	For short term use, store at 2-8°C up to 1 week. For long term storage, store at -20°C in small aliquots to prevent freeze-thaw cycles.
Stability:	Shelf life: one year from despatch.
Predicted Protein Size:	33kDa
Gene Name:	mitochondrial fission regulator 1
Database Link:	NP_064528 Entrez Gene 56902 Human Entrez Gene 9650 Human Q9NRX1
Background:	This gene encodes a mitochondrial protein that is characterized by a poly-proline rich region. A chicken homolog of this protein promotes mitochondrial fission and the mouse homolog protects cells from oxidative stress. A related pseudogene of this gene is found on chromosome X.
Synonyms:	CHPPR; FAM54A2; KIAA0009



[View online »](#)

Product images:



WB Suggested Anti-MTFR1 Antibody
Titration: 1.0 ug/ml
Positive Control: Fetal Liver