

Product datasheet for **TA358207**

MCPIP1 (ZC3H12A) Rabbit Polyclonal Antibody

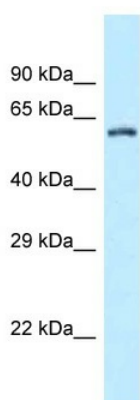
Product data:

Product Type:	Primary Antibodies
Applications:	WB
Reactivity:	Human
Host:	Rabbit
Clonality:	Polyclonal
Specificity:	Expected reactivity: Cow, Dog, Horse, Human Homology: Cow: 85%; Dog: 86%; Horse: 92%; Human: 100%
Formulation:	Liquid. Purified antibody supplied in 1x PBS buffer with 0.09% (w/v) sodium azide and 2% sucrose. <i>Note that this product is shipped as lyophilized powder to China customers.</i>
Concentration:	lot specific
Purification:	Affinity Purified
Conjugation:	Unconjugated
Storage:	For short term use, store at 2-8°C up to 1 week. For long term storage, store at -20°C in small aliquots to prevent freeze-thaw cycles.
Stability:	Shelf life: one year from despatch.
Predicted Protein Size:	66kDa
Gene Name:	zinc finger CCCH-type containing 12A
Database Link:	NP_789775 Entrez Gene 64963 Human Entrez Gene 80149 Human P82912-3
Background:	ZC3H12A is an MCP1-induced protein that acts as a transcriptional activator and causes cell death of cardiomyocytes, possibly via induction of genes associated with apoptosis.
Synonyms:	dj423B22.1; FLJ23231; MCPIP; MCPIP1; OTTHUMP00000004399; RP3-423B22.1



[View online »](#)

Product images:



WB Suggested Anti-ZC3H12A Antibody
Titration: 1.0 ug/ml
Positive Control: Fetal Brain