

Product datasheet for **TA358203**

GPR37L1 Rabbit Polyclonal Antibody

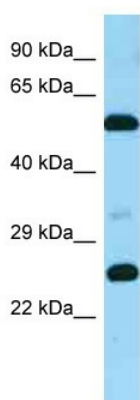
Product data:

| | |
|-------------------------|--|
| Product Type: | Primary Antibodies |
| Applications: | WB |
| Reactivity: | Human |
| Host: | Rabbit |
| Clonality: | Polyclonal |
| Specificity: | Expected reactivity: Dog, Horse, Human, Mouse, Pig, Rat Homology: Dog: 79%; Horse: 86%; Human: 100%; Mouse: 79%; Pig: 79%; Rat: 79% |
| Formulation: | Liquid. Purified antibody supplied in 1x PBS buffer with 0.09% (w/v) sodium azide and 2% sucrose. |
| Concentration: | lot specific |
| Purification: | Affinity Purified |
| Conjugation: | Unconjugated |
| Storage: | For short term use, store at 2-8°C up to 1 week. For long term storage, store at -20°C in small aliquots to prevent freeze-thaw cycles. |
| Stability: | Shelf life: one year from despatch. |
| Predicted Protein Size: | 53kDa |
| Gene Name: | G protein-coupled receptor 37 like 1 |
| Database Link: | NP_004758 Entrez Gene 9283 Human O60883 |
| Background: | GPR37L1 is a orphan receptor. |
| Synonyms: | ET(B)R-LP-2; ETBR-LP-2 |
| Protein Families: | Druggable Genome, GPCR, Transmembrane |



[View online »](#)

Product images:



WB Suggested Anti-GPR37L1 Antibody
Titration: 1.0 ug/ml
Positive Control: Fetal Brain