

## Product datasheet for **TA358199**

### CPNE3 Rabbit Polyclonal Antibody

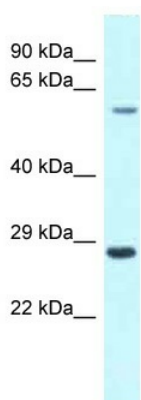
#### Product data:

Product Type:	Primary Antibodies
Applications:	WB
Reactivity:	Human
Host:	Rabbit
Clonality:	Polyclonal
Specificity:	<b>Expected reactivity:</b> Cow, Human <b>Homology:</b> Cow: 100%; Human: 100%
Formulation:	Liquid. Purified antibody supplied in 1x PBS buffer with 0.09% (w/v) sodium azide and 2% sucrose. <i>Note that this product is shipped as lyophilized powder to China customers.</i>
Concentration:	lot specific
Purification:	Affinity Purified
Conjugation:	Unconjugated
Storage:	For short term use, store at 2-8°C up to 1 week. For long term storage, store at -20°C in small aliquots to prevent freeze-thaw cycles.
Stability:	Shelf life: one year from despatch.
Predicted Protein Size:	59kDa
Gene Name:	copine 3
Database Link:	<a href="#">NP_060668</a> <a href="#">Entrez Gene 55735 Human</a> <a href="#">Entrez Gene 8895 Human</a> <a href="#">Q9NVH1</a>
Background:	Calcium-dependent membrane-binding proteins may regulate molecular events at the interface of the cell membrane and cytoplasm. This gene encodes a protein which contains two type II C2 domains in the amino-terminus and an A domain-like sequence in the carboxy-terminus. The A domain mediates interactions between integrins and extracellular ligands.
Synonyms:	CPN3; KIAA0636; PRO1071



[View online »](#)

Product images:



WB Suggested Anti-CPNE3 Antibody  
Titration: 1.0 ug/ml  
Positive Control: Fetal Heart