

Product datasheet for **TA358196**

EEF1E1 Rabbit Polyclonal Antibody

Product data:

Product Type:	Primary Antibodies
Applications:	WB
Reactivity:	Human
Host:	Rabbit
Clonality:	Polyclonal
Specificity:	Expected reactivity: Cow, Dog, Guinea Pig, Horse, Human, Mouse, Rabbit, Rat Homology: Cow: 100%; Dog: 100%; Guinea Pig: 93%; Horse: 100%; Human: 100%; Mouse: 86%; Rabbit: 100%; Rat: 86%
Formulation:	Liquid. Purified antibody supplied in 1x PBS buffer with 0.09% (w/v) sodium azide and 2% sucrose. <i>Note that this product is shipped as lyophilized powder to China customers.</i>
Concentration:	lot specific
Purification:	Affinity Purified
Conjugation:	Unconjugated
Storage:	For short term use, store at 2-8°C up to 1 week. For long term storage, store at -20°C in small aliquots to prevent freeze-thaw cycles.
Stability:	Shelf life: one year from despatch.
Predicted Protein Size:	19kDa
Gene Name:	eukaryotic translation elongation factor 1 epsilon 1
Database Link:	NP_004271 Entrez Gene 9521 Human O43324



[View online »](#)

Background:

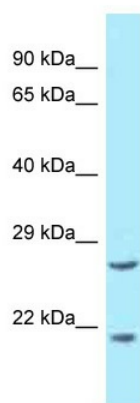
This gene encodes a multifunctional protein that localizes to both the cytoplasm and nucleus. In the cytoplasm, the encoded protein is an auxiliary component of the macromolecular aminoacyl-tRNA synthase complex. However, its mouse homolog has been shown to translocate to the nucleus in response to DNA damage, and it plays a positive role in ATM/ATR-mediated p53 activation. Alternative splicing results in multiple transcript variants. Read-through transcription also exists between this gene and the neighboring downstream MUTED (muted homolog) gene. An EEF1E1-related pseudogene has been identified on chromosome 2.

Synonyms:

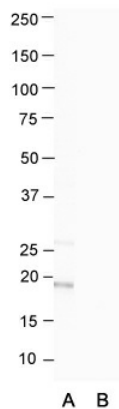
AIMP3; P18

Protein Families:

Druggable Genome

Product images:


WB Suggested Anti-EEF1E1 Antibody
Titration: 1.0 ug/ml
Positive Control: OVCAR-3 Whole Cell


Anti-EEF1E1 Western Blot & Peptide Block Validation

Lot Number: QC33159

Sample Type: Human OVCAR-3

Lane A: Primary Antibody

Lane B: Primary Antibody + Blocking Peptide

Primary Antibody Concentration: 1.0ug/ml

Peptide Concentration: 2.0ug/ml

Lysate Quantity: 25ug/lane

Host: Rabbit

Target Name: EEF1E1

Sample Type: Human OVCAR-3

Lane A: Primary Antibody

Lane B: Primary Antibody + Blocking Peptide

Primary Antibody Concentration: 1.0 ug/ml

Peptide Concentration: 2.0 ug/ml

Lysate Quantity: 25 ug/lane