

Product datasheet for **TA358194**

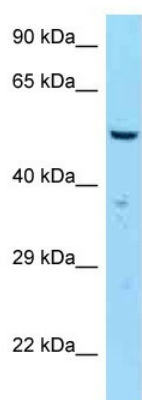
SASS6 Rabbit Polyclonal Antibody

Product data:

Product Type:	Primary Antibodies
Applications:	WB
Reactivity:	Human
Host:	Rabbit
Clonality:	Polyclonal
Specificity:	Expected reactivity: Cow, Dog, Guinea Pig, Horse, Human, Mouse, Rabbit, Rat Homology: Cow: 93%; Dog: 86%; Guinea Pig: 93%; Horse: 93%; Human: 100%; Mouse: 79%; Rabbit: 93%; Rat: 93%
Formulation:	Liquid. Purified antibody supplied in 1x PBS buffer with 0.09% (w/v) sodium azide and 2% sucrose.
Concentration:	lot specific
Purification:	Affinity Purified
Conjugation:	Unconjugated
Storage:	For short term use, store at 2-8°C up to 1 week. For long term storage, store at -20°C in small aliquots to prevent freeze-thaw cycles.
Stability:	Shelf life: one year from despatch.
Predicted Protein Size:	53kDa
Gene Name:	SAS-6 centriolar assembly protein
Database Link:	NP_919268 Entrez Gene 163786 Human Q495U0
Background:	SAS6 is necessary for centrosome duplication and functions during procentriole formation; SAS6 functions to ensure that each centriole seeds the formation of a single procentriole per cell cycle.
Synonyms:	DKFZp761A078; FLJ22097; HsSAS-6; MGC119440; SAS-6; SAS6



[View online »](#)

Product images:

WB Suggested Anti-SASS6 Antibody
Titration: 1.0 ug/ml
Positive Control: MCF7 Whole Cell