

## Product datasheet for **TA358193**

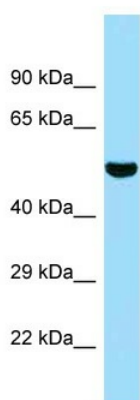
### Sugct Rabbit Polyclonal Antibody

#### Product data:

Product Type:	Primary Antibodies
Applications:	WB
Reactivity:	Mouse
Host:	Rabbit
Clonality:	Polyclonal
Specificity:	<b>Expected reactivity:</b> Cow, Dog, Horse, Human, Mouse, Rabbit, Rat, Zebrafish <b>Homology:</b> Cow: 93%; Dog: 86%; Horse: 100%; Human: 100%; Mouse: 100%; Rabbit: 100%; Rat: 100%; Zebrafish: 91%
Formulation:	Liquid. Purified antibody supplied in 1x PBS buffer with 0.09% (w/v) sodium azide and 2% sucrose.
Concentration:	lot specific
Purification:	Affinity Purified
Conjugation:	Unconjugated
Storage:	For short term use, store at 2-8°C up to 1 week. For long term storage, store at -20°C in small aliquots to prevent freeze-thaw cycles.
Stability:	Shelf life: one year from despatch.
Predicted Protein Size:	48kDa
Gene Name:	succinyl-CoA glutarate-CoA transferase
Database Link:	<a href="#">NP_619595</a> <a href="#">Entrez Gene 192136 Mouse</a> <a href="#">G3X9F8</a>



[View online »](#)

**Product images:**

WB Suggested Anti-5033411D12Rik Antibody  
Titration: 1.0 ug/ml  
Positive Control: Mouse Thymus