

## Product datasheet for **TA358188**

### LPGAT1 Rabbit Polyclonal Antibody

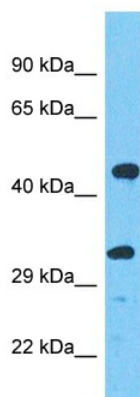
#### Product data:

Product Type:	Primary Antibodies
Applications:	WB
Reactivity:	Human
Host:	Rabbit
Clonality:	Polyclonal
Immunogen:	The immunogen is a synthetic peptide directed towards the middle region of Human LPGAT1
Specificity:	<b>Expected reactivity:</b> Human
Formulation:	Liquid. Purified antibody supplied in 1x PBS buffer with 0.09% (w/v) sodium azide and 2% sucrose.
Concentration:	lot specific
Purification:	Affinity Purified
Conjugation:	Unconjugated
Storage:	For short term use, store at 2-8°C up to 1 week. For long term storage, store at -20°C in small aliquots to prevent freeze-thaw cycles.
Stability:	Shelf life: one year from despatch.
Predicted Protein Size:	40kDa
Gene Name:	lysophosphatidylglycerol acyltransferase 1
Database Link:	<a href="#">XP_005273421</a> <a href="#">Entrez Gene 9926 Human</a> <a href="#">Q92604</a>
Background:	LPGAT1 is a lysophosphatidylglycerol (LPG) specific acyltransferase that recognizes various acyl-CoAs and LPGs as substrates but demonstrates a clear preference for long chain saturated fatty acyl-CoAs and oleoyl-CoA as acyl donors. It prefers oleoyl-LPG over palmitoyl-LPG as an acyl receptor and oleoyl-CoA over lauroyl-CoA as an acyl donor.
Synonyms:	FAM34A; FAM34A1; KIAA0205; NET8; OTTHUMP00000035215



[View online »](#)

## Product images:



Host: Rabbit  
Target Name: LPGAT1  
Sample Tissue: A549 Cell Lysate  
Antibody Dilution: 1.0 $\mu$ g/ml

Host: Rabbit  
Target Name: LPGAT1  
Sample Type: A549 Whole Cell lysates  
Antibody Dilution: 1.0ug/ml