

Product datasheet for **TA358184**

DPEP2 Rabbit Polyclonal Antibody

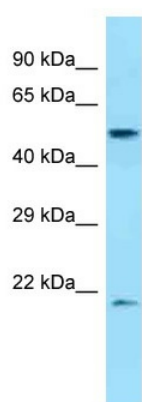
Product data:

Product Type:	Primary Antibodies
Applications:	WB
Reactivity:	Human
Host:	Rabbit
Clonality:	Polyclonal
Specificity:	Expected reactivity: Cow, Dog, Horse, Human, Pig Homology: Cow: 79%; Dog: 86%; Horse: 79%; Human: 100%; Pig: 79%
Formulation:	Liquid. Purified antibody supplied in 1x PBS buffer with 0.09% (w/v) sodium azide and 2% sucrose. <i>Note that this product is shipped as lyophilized powder to China customers.</i>
Concentration:	lot specific
Purification:	Affinity Purified
Conjugation:	Unconjugated
Storage:	For short term use, store at 2-8°C up to 1 week. For long term storage, store at -20°C in small aliquots to prevent freeze-thaw cycles.
Stability:	Shelf life: one year from despatch.
Predicted Protein Size:	53kDa
Gene Name:	dipeptidase 2
Database Link:	NP_071750 Entrez Gene 64174 Human Q9H4A9
Background:	DPEP2 belongs to the membrane-bound dipeptidase (EC 3.4.13.19) family. These enzymes hydrolyze a variety of dipeptides, including leukotriene D4, the beta-lactam ring of some antibiotics, and cystinyl-bis-glycine (cys-bis-gly) formed during glutathione degradation.
Synonyms:	MBD2; OTTHUMP00000174846
Protein Families:	Druggable Genome, Protease



[View online »](#)

Product images:



WB Suggested Anti-DPEP2 Antibody
Titration: 1.0 ug/ml
Positive Control: THP-1 Whole Cell