

## Product datasheet for **TA358183**

### LPGAT1 Rabbit Polyclonal Antibody

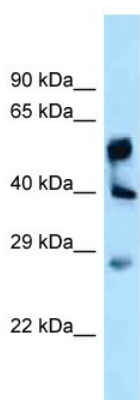
#### Product data:

Product Type:	Primary Antibodies
Applications:	WB
Reactivity:	Human
Host:	Rabbit
Clonality:	Polyclonal
Specificity:	<b>Expected reactivity:</b> Cow, Dog, Guinea Pig, Horse, Human, Pig, Rabbit, Rat <b>Homology:</b> Cow: 93%; Dog: 93%; Guinea Pig: 85%; Horse: 93%; Human: 100%; Pig: 100%; Rabbit: 93%; Rat: 93%
Formulation:	Liquid. Purified antibody supplied in 1x PBS buffer with 0.09% (w/v) sodium azide and 2% sucrose.
Concentration:	lot specific
Purification:	Affinity Purified
Conjugation:	Unconjugated
Storage:	For short term use, store at 2-8°C up to 1 week. For long term storage, store at -20°C in small aliquots to prevent freeze-thaw cycles.
Stability:	Shelf life: one year from despatch.
Predicted Protein Size:	41kDa
Gene Name:	lysophosphatidylglycerol acyltransferase 1
Database Link:	<a href="#">NP_055688</a> <a href="#">Entrez Gene 9926 Human</a> <a href="#">Q92604</a>
Background:	Acyl-CoA:lysophosphatidylglycerol (LPG) acyltransferase catalyzes the reacylation of LPG to phosphatidylglycerol, a membrane phospholipid that is an important precursor for the synthesis of cardiolipin.
Synonyms:	FAM34A; FAM34A1; KIAA0205; NET8; OTTHUMP00000035215
Protein Families:	Transmembrane



[View online »](#)

Product images:



WB Suggested Anti-LPGAT1 Antibody  
Titration: 1.0 ug/ml  
Positive Control: Fetal Liver