

Product datasheet for **TA358180**

CTPS2 Rabbit Polyclonal Antibody

Product data:

Product Type:	Primary Antibodies
Applications:	IHC, WB
Reactivity:	Human
Host:	Rabbit
Clonality:	Polyclonal
Specificity:	Expected reactivity: Cow, Dog, Guinea Pig, Horse, Human, Mouse, Pig, Rabbit, Rat, Zebrafish Homology: Cow: 100%; Dog: 100%; Guinea Pig: 93%; Horse: 100%; Human: 100%; Mouse: 100%; Pig: 100%; Rabbit: 100%; Rat: 100%; Zebrafish: 100%
Formulation:	Liquid. Purified antibody supplied in 1x PBS buffer with 0.09% (w/v) sodium azide and 2% sucrose. <i>Note that this product is shipped as lyophilized powder to China customers.</i>
Concentration:	lot specific
Purification:	Affinity Purified
Conjugation:	Unconjugated
Storage:	For short term use, store at 2-8°C up to 1 week. For long term storage, store at -20°C in small aliquots to prevent freeze-thaw cycles.
Stability:	Shelf life: one year from despatch.
Predicted Protein Size:	64kDa
Gene Name:	CTP synthase 2
Database Link:	NP_787055 Entrez Gene 56474 Human Q9NRF8



[View online »](#)

Background:

The protein encoded by this gene catalyzes the formation of CTP from UTP with the concomitant deamination of glutamine to glutamate. This protein is the rate-limiting enzyme in the synthesis of cytosine nucleotides, which play an important role in various metabolic processes and provide the precursors necessary for the synthesis of RNA and DNA. Cancer cells that exhibit increased cell proliferation also exhibit an increased activity of this encoded protein. Thus, this protein is an attractive target for selective chemotherapy. Three alternatively spliced transcript variants encoding the same protein have been described for this gene.

Synonyms:

DKFZp686C17207; FLJ43358; MGC32997

Protein Pathways:

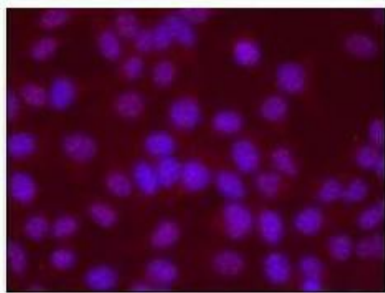
Metabolic pathways, Pyrimidine metabolism

Product images:


WB Suggested Anti-CTPS2 Antibody

Titration: 1.0 ug/ml

Positive Control: HeLa Whole Cell CTPS2 is supported by BioGPS gene expression data to be expressed in HeLa

CTPS2


Red: CTPS2 Blue: DAPI

See IHC 1 Data and Customer Feedback for more Information

Sample Type:

Human Hep-2 cells

Primary Antibody Dilution:

1:500

Secondary Antibody:

Goat anti-rabbit-Alexa Fluor 568

Secondary Antibody Dilution:

1:400

Color/Signal Descriptions:

Red: CTPS2 Blue: DAPI

Gene Name:

CTPS2

Submitted by:

S. John Calise, Edward Chan Lab, University of Florida