

Product datasheet for **TA358176**

C3orf15 (MAATS1) Rabbit Polyclonal Antibody

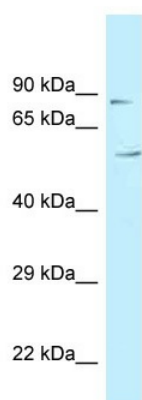
Product data:

| | |
|-------------------------|---|
| Product Type: | Primary Antibodies |
| Applications: | WB |
| Reactivity: | Human |
| Host: | Rabbit |
| Clonality: | Polyclonal |
| Specificity: | Expected reactivity: Horse, Human, Rabbit Homology: Horse: 79%; Human: 100%; Rabbit: 86% |
| Formulation: | Liquid. Purified antibody supplied in 1x PBS buffer with 0.09% (w/v) sodium azide and 2% sucrose. <i>Note that this product is shipped as lyophilized powder to China customers.</i> |
| Concentration: | lot specific |
| Purification: | Affinity Purified |
| Conjugation: | Unconjugated |
| Storage: | For short term use, store at 2-8°C up to 1 week. For long term storage, store at -20°C in small aliquots to prevent freeze-thaw cycles. |
| Stability: | Shelf life: one year from despatch. |
| Predicted Protein Size: | 84kDa |
| Gene Name: | MYCBP associated and testis expressed 1 |
| Database Link: | NP_203528 Entrez Gene 89876 Human Q7Z4T9-7 |
| Background: | Isoform 4 of C3orf15 may play a role in spermatogenesis. |
| Synonyms: | AAT1; AAT1alpha; C3orf15; SPATA26 |



[View online »](#)

Product images:



WB Suggested Anti-C3orf15 Antibody
Titration: 1.0 ug/ml
Positive Control: Fetal Heart