

## Product datasheet for TA358172

### PPP6C Rabbit Polyclonal Antibody

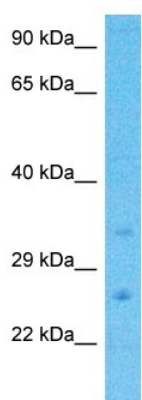
#### Product data:

Product Type:	Primary Antibodies
Applications:	WB
Reactivity:	Human
Host:	Rabbit
Clonality:	Polyclonal
Immunogen:	The immunogen is a synthetic peptide directed towards the C-terminal region of Human PPP6C
Specificity:	<b>Expected reactivity:</b> Human
Formulation:	Liquid. Purified antibody supplied in 1x PBS buffer with 0.09% (w/v) sodium azide and 2% sucrose. <i>Note that this product is shipped as lyophilized powder to China customers.</i>
Concentration:	lot specific
Purification:	Affinity Purified
Conjugation:	Unconjugated
Storage:	For short term use, store at 2-8°C up to 1 week. For long term storage, store at -20°C in small aliquots to prevent freeze-thaw cycles.
Stability:	Shelf life: one year from despatch.
Predicted Protein Size:	33kDa
Gene Name:	protein phosphatase 6 catalytic subunit
Database Link:	<a href="#">NP_002712</a> <a href="#">Entrez Gene 5537 Human</a> <a href="#">O00743</a>
Background:	This gene encodes the catalytic subunit of protein phosphatase, a component of a signaling pathway regulating cell cycle progression. Splice variants encoding different protein isoforms exist. The pseudogene of this gene is located on chromosome X.
Synonyms:	FLJ92648; MGC12249; PP6C; PPP6



[View online »](#)

## Product images:



Host: Rabbit  
Target Name: PPP6C  
Sample Tissue: Hela Cell Lysate  
Antibody Dilution: 1.0 $\mu$ g/ml

Host: Rabbit  
Target Name: PPP6C  
Sample Type: Hela Whole Cell lysates  
Antibody Dilution: 1.0ug/ml