

Product datasheet for **TA358170**

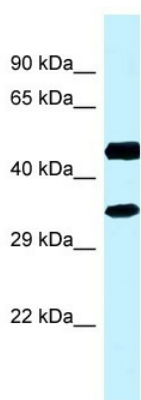
RDH13 Rabbit Polyclonal Antibody

Product data:

| | |
|-------------------------|---|
| Product Type: | Primary Antibodies |
| Applications: | WB |
| Reactivity: | Human |
| Host: | Rabbit |
| Clonality: | Polyclonal |
| Specificity: | Expected reactivity: Cow, Dog, Goat, Guinea Pig, Horse, Human, Mouse, Rabbit, Rat Homology: Cow: 92%; Dog: 93%; Goat: 100%; Guinea Pig: 93%; Horse: 100%; Human: 100%; Mouse: 93%; Rabbit: 92%; Rat: 93% |
| Formulation: | Liquid. Purified antibody supplied in 1x PBS buffer with 0.09% (w/v) sodium azide and 2% sucrose. |
| Concentration: | lot specific |
| Purification: | Affinity Purified |
| Conjugation: | Unconjugated |
| Storage: | For short term use, store at 2-8°C up to 1 week. For long term storage, store at -20°C in small aliquots to prevent freeze-thaw cycles. |
| Stability: | Shelf life: one year from despatch. |
| Predicted Protein Size: | 36kDa |
| Gene Name: | retinol dehydrogenase 13 (all-trans/9-cis) |
| Database Link: | NP_001139443 Entrez Gene 112724 Human Q8NBN7 |
| Background: | This gene encodes a mitochondrial short-chain dehydrogenase/reductase, which catalyzes the reduction and oxidation of retinoids. The encoded enzyme may function in retinoic acid production and may also protect the mitochondria against oxidative stress. Alternatively spliced transcript variants have been described. |
| Synonyms: | DKFZp313H0740; FLJ39479; SDR7C3 |
| Protein Families: | Druggable Genome |



[View online »](#)

Product images:

WB Suggested Anti-RDH13 Antibody
Titration: 1.0 ug/ml
Positive Control: Fetal kidney