

Product datasheet for **TA358165**

PSCDBP (CYTIP) Rabbit Polyclonal Antibody

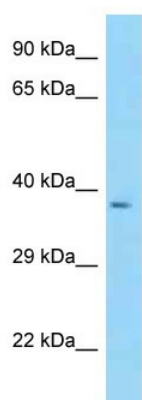
Product data:

Product Type:	Primary Antibodies
Applications:	WB
Reactivity:	Human
Host:	Rabbit
Clonality:	Polyclonal
Specificity:	Expected reactivity: Guinea Pig, Human, Mouse, Pig, Rat Homology: Guinea Pig: 75%; Human: 100%; Mouse: 79%; Pig: 79%; Rat: 79%
Formulation:	Liquid. Purified antibody supplied in 1x PBS buffer with 0.09% (w/v) sodium azide and 2% sucrose. <i>Note that this product is shipped as lyophilized powder to China customers.</i>
Concentration:	lot specific
Purification:	Affinity Purified
Conjugation:	Unconjugated
Storage:	For short term use, store at 2-8°C up to 1 week. For long term storage, store at -20°C in small aliquots to prevent freeze-thaw cycles.
Stability:	Shelf life: one year from despatch.
Predicted Protein Size:	39kDa
Gene Name:	cytohesin 1 interacting protein
Database Link:	NP_004279 Entrez Gene 9595 Human O60759
Background:	The protein encoded by this gene contains 2 leucine zipper domains and a putative C-terminal nuclear targeting signal, but does not have any hydrophobic regions. This protein is expressed weakly in resting NK and T cells. The encoded protein modulates the activation of ARF genes by CYTH1. This protein interacts with CYTH1 and SNX27 proteins and may act to sequester CYTH1 protein in the cytoplasm.
Synonyms:	B3-1; CASP; CYBR; CYTHIP; HE; PSCDBP



[View online »](#)

Product images:



WB Suggested Anti-CYTIP Antibody
Titration: 1.0 ug/ml
Positive Control: Fetal Heart