

## Product datasheet for **TA358163**

### BSPRY Rabbit Polyclonal Antibody

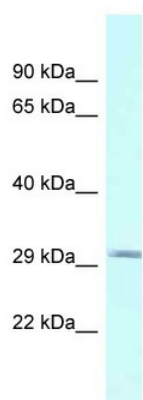
#### Product data:

Product Type:	Primary Antibodies
Applications:	WB
Reactivity:	Human
Host:	Rabbit
Clonality:	Polyclonal
Specificity:	<b>Expected reactivity:</b> Cow, Dog, Guinea Pig, Horse, Human, Mouse, Pig, Rat <b>Homology:</b> Cow: 100%; Dog: 100%; Guinea Pig: 82%; Horse: 100%; Human: 100%; Mouse: 100%; Pig: 100%; Rat: 93%
Formulation:	Liquid. Purified antibody supplied in 1x PBS buffer with 0.09% (w/v) sodium azide and 2% sucrose.
Concentration:	lot specific
Purification:	Affinity Purified
Conjugation:	Unconjugated
Storage:	For short term use, store at 2-8°C up to 1 week. For long term storage, store at -20°C in small aliquots to prevent freeze-thaw cycles.
Stability:	Shelf life: one year from despatch.
Predicted Protein Size:	33kDa
Gene Name:	B-box and SPRY domain containing
Database Link:	<a href="#">NP_060158</a> <a href="#">Entrez Gene 54836 Human</a> <a href="#">Q5W0U4</a>
Background:	BSPRY may regulate epithelial calcium transport by inhibiting TRPV5 activity.
Synonyms:	FLJ20150
Protein Families:	Druggable Genome



[View online »](#)

## Product images:



WB Suggested Anti-BSPRY Antibody  
Titration: 1.0 ug/ml  
Positive Control: Fetal Heart