

Product datasheet for **TA358153**

Pitpnc1 Rabbit Polyclonal Antibody

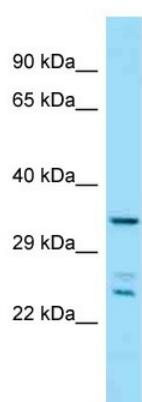
Product data:

Product Type:	Primary Antibodies
Applications:	WB
Reactivity:	Mouse
Host:	Rabbit
Clonality:	Polyclonal
Specificity:	Expected reactivity: Dog, Guinea Pig, Horse, Human, Mouse, Rabbit, Rat, Zebrafish Homology: Dog: 93%; Guinea Pig: 93%; Horse: 93%; Human: 100%; Mouse: 93%; Rabbit: 93%; Rat: 93%; Zebrafish: 86%
Formulation:	Liquid. Purified antibody supplied in 1x PBS buffer with 0.09% (w/v) sodium azide and 2% sucrose. <i>Note that this product is shipped as lyophilized powder to China customers.</i>
Concentration:	lot specific
Purification:	Affinity Purified
Conjugation:	Unconjugated
Storage:	For short term use, store at 2-8°C up to 1 week. For long term storage, store at -20°C in small aliquots to prevent freeze-thaw cycles.
Stability:	Shelf life: one year from despatch.
Predicted Protein Size:	32kDa
Gene Name:	phosphatidylinositol transfer protein, cytoplasmic 1
Database Link:	NP_665822 Entrez Gene 71795 Mouse Q8K4R4-2
Background:	Phosphatidylinositol transfer proteins mediate the monomeric transport of lipids by shielding a lipid from the aqueous environment and binding the lipid in a hydrophobic cavity. Able to transfer phosphatidylinositol in vitro. Isoform 2 specifically binds to phosphatidylinositol but not to other phospholipids and may play a role in the phosphoinositide-mediated signaling in the neural development.
Synonyms:	MrdgBbeta; RDGB-BETA; RDGGB; RDGGB1; RdgBbeta



[View online »](#)

Product images:



WB Suggested Anti-Pitpnc1 Antibody
Titration: 1.0 ug/ml
Positive Control: Mouse Small Intestine